



# ЦНЦ НЕСТИНГ

RK-2128-PREMIUM

РЕЗЕРВНИ ДЕЛОВИ



## Servo VEICHI AC Servo Motor:

### o X-axis

Veichi AC Servo Motor  
VM7-M13A-1R020-R1  
5.5A          220V          1,5kW  
5,77N.m      3 PH          Ins.F  
Rated 2000 rpm      max – 3000 rpm  
s/n: 9120121905VORKA16198740

### o Y-axis (x 2)

Veichi AC Servo Motor  
VM7-M13A-1R020-R1  
5.5A          220V          1,5kW  
5,77N.m      3 PH          Ins.F  
Rated 2000 rpm      max – 3000 rpm  
s/n: 9120121905VORKA16198740

### o Z-axis

Veichi AC Servo Motor  
VM7-M13A-1R020-R2  
5.5A          220V          1,5kW  
5,77N.m      3 PH          Ins.F  
Rated 2000 rpm      max – 3000 rpm  
s/n: 9120121905VORKA16198740



## Spindle

HQD GDL70-24Z/9.0  
Asynchronous 3 phase motor  
380V          400Hz          12000 rpm  
S1 continuous: 7.5kW – 10 HP      20A  
S6 (60%)      9kW – 12 HP  
4 Poles                      IP64

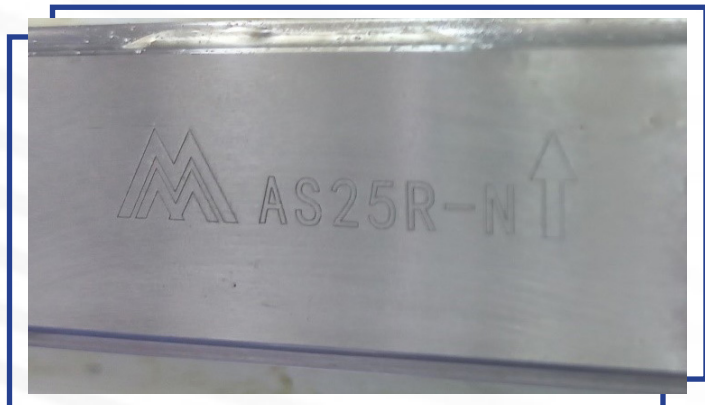
Nominal: 12000rpm peak performance 9kW  
Max: 21000rpm 7kW



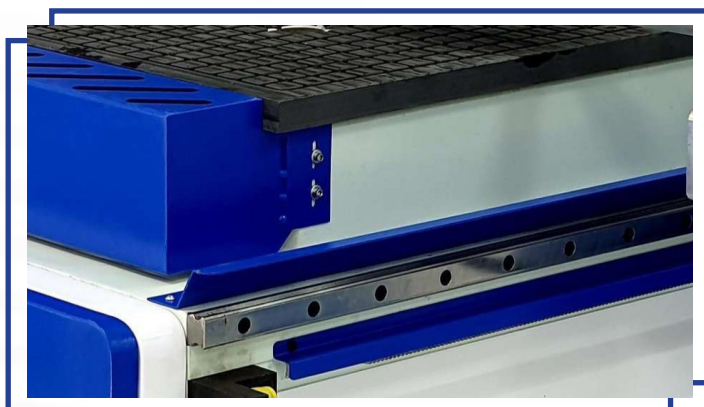


**Linear Rails**

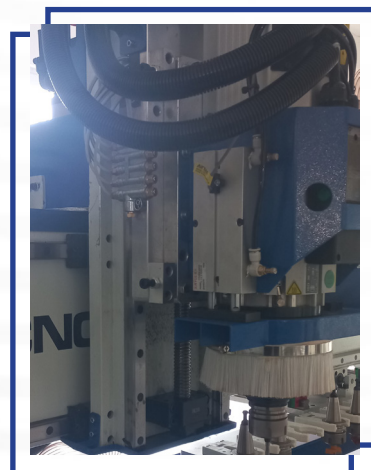
◦ **X-axis (x2) – AS25R-N**



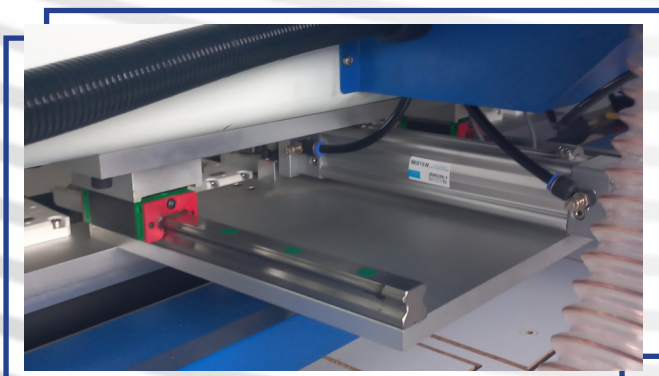
◦ **Y-axis (x2) – AS30R-N**



◦ **Z-axis (x2) – AS25R-N**



◦ **ATC Automatic Tool Change Magazine (x2) – AS25R-N**



**Pneumatic Guided Rod Actuator  
for Spindle Dust Extraction Carriage**

Guided air cylinder, dual rod, single channel

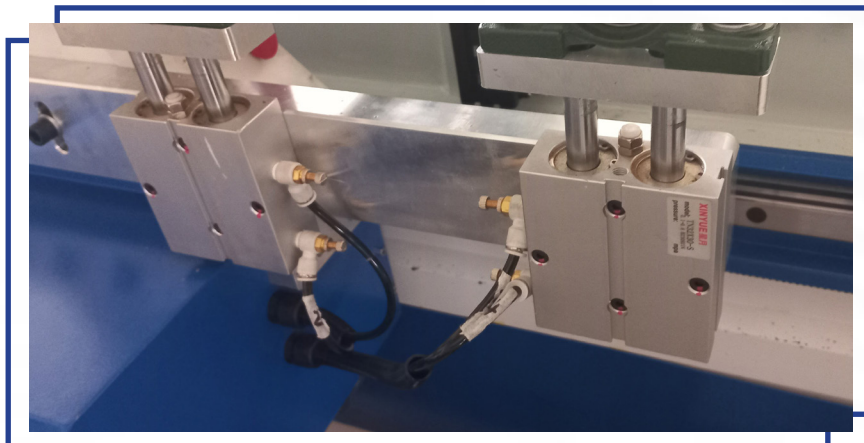
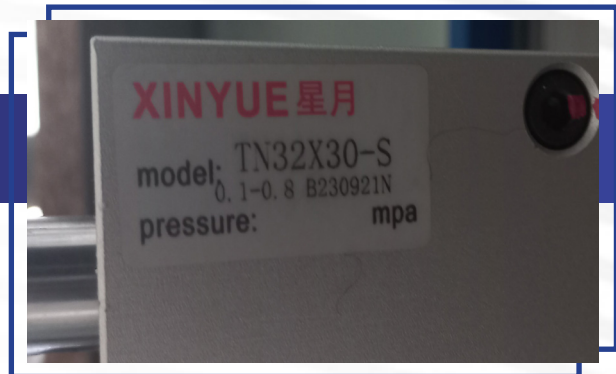
Xinyue TN25x100-S                      Tubing: 6x4mm  
25mm bore, 100mm stroke  
s/n: B230310N



**Pneumatic Guided Rod Actuator  
for Roll Press**

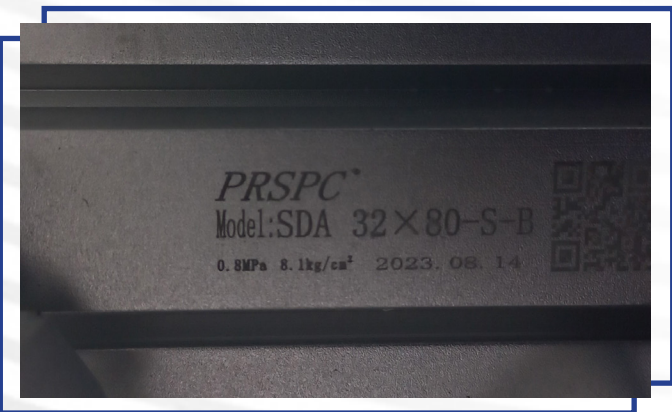
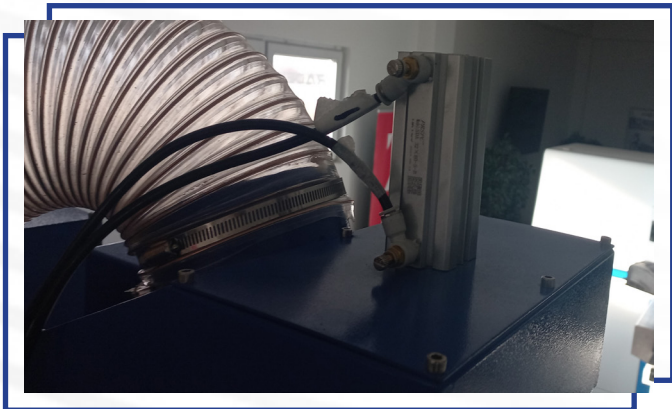
2x guided air cylinders, left and right side

Xinyue TN32x30-S                      Tubing: 6x4mm  
32mm bore, 30mm stroke  
s/n: B230921N



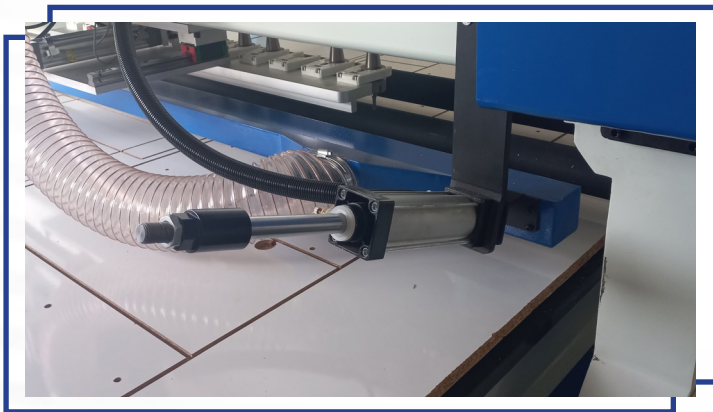
**Pneumatic Cylinder for Dust Collection Slot**

PRSPC Tubing: 6x4mm  
 Model: SDA 32x80-S-B  
 0,8 MPa 8,1 kg/cm<sup>2</sup>



**Pneumatic Cylinder for Dust Collection System (Dust CLR.)**

(2x) Xinyue SCJ 50x150-50-S Pneumatic Rod Actuator  
 Tubing: 8x5mm



**Pneumatic Air Cylinder for ATC Automatic tool changer Magazine**

(2x) Besten Pneumatic Cylinder Tubing: 8x5mm  
 JSU40x200-S  
 0,1 – 1 Mpa  
 CAV-N-LI (3)



**Pneumatic Actuator Positioners**

PRSPC  
 Model: ACQ 40x30x25  
 0,8 MPa      8,1kg/cm2

Tubing: 6x4mm



**Power Relay**

Brand: OMRON  
 Model: MY2IN  
 Power: DC 24V 37.7mA



**Pressure regulator, Separator & Filter (Main)**

Xinyue AC4010-04  
 0,15 – 0,8 MPa

Tubing: 8x5mm



**Pressure regulator (x2)**

Xingyue  
 AR2000-02  
 0.15-0.8MPa  
 K230515R

1. Behind Gantry
2. Behind the rack & pinion

Tubing: 6x4mm

Tubing: 8x5mm



**Positioning sensor / Spindle Pneumatic Actuators**

AirTAC  
 Model: CS1-J  
 DC/AC: 5-240V 100mA 10W



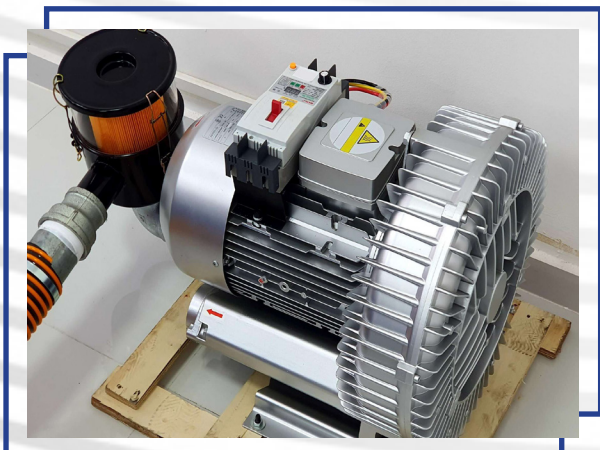
**Positioning Sensor (x2) / ATC magazine**

(2x) CS1-F  
 Model: CS1F020  
 DC/AC: 5-240V 100mA 10W



**Vacuum Pump**

Model: Baili 2GH810H27  
 Power: 7,5kW 380V 50/60Hz  
 Rpm: 2840rpm  
 Flow: 530/600 m3/h  
 Vacuum: -400/420 mBar  
 Serial: Y230808114



Motor protector:  
 Baili DZ15LD-100  
 2A-40A 1.1-11kW  
 AC: 380V AC-3 50Hz





# Electrical Cabinet

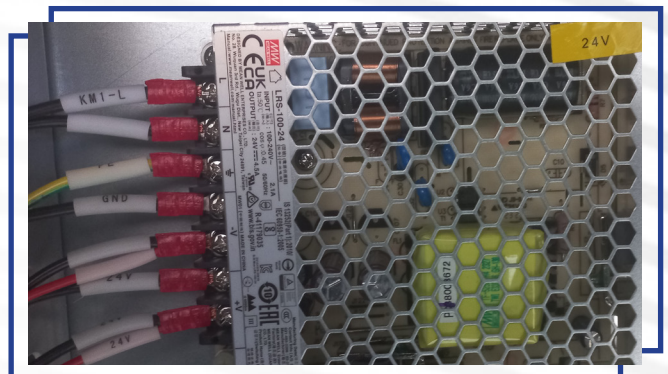
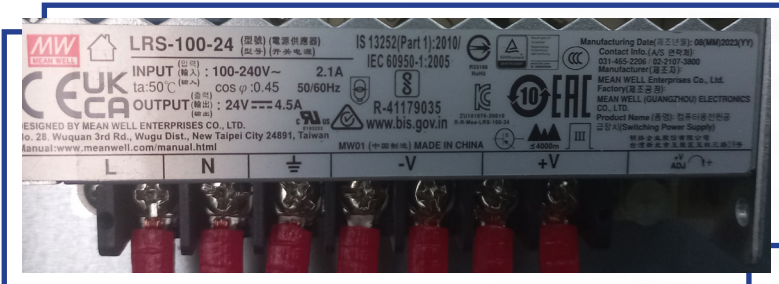
## Inverter

ZONCN  
 Model: Z2400-15G-DKS1-BR  
 Input: 3PH 380V 50/60Hz  
 Output: 3PH 380V 32A 15kW  
 Freq. range: 0,1 – 1000Hz  
 Serial: ZC230903237527-11110



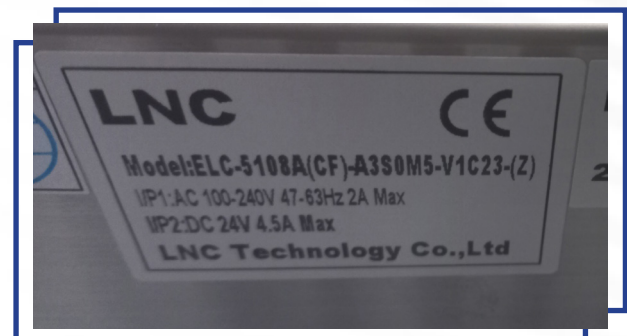
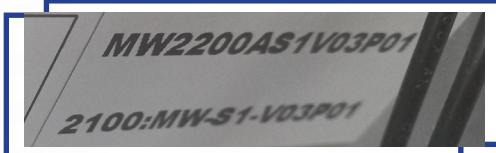
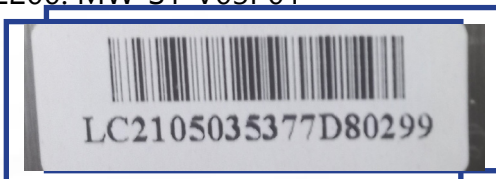
## 24V Power Supply

Model: mean well LRS-100-24  
 Input: AC 100-240V 2,1A 50/60Hz  
 Output: DC 24V 4,5A  
 R-41179035



## Controller

LNC  
 LC2105035377D80299  
 Input: AC 100-240V  
 Model: ELC-5109A(CF)-A3S0M5-V1C23-(Z)  
 I/P1: AC 100-240V 47-63 Hz 2A max  
 I/P2: DC 24v 4,5A max  
 MW2200AS1V03P01  
 2200: MW-S1-V03P01



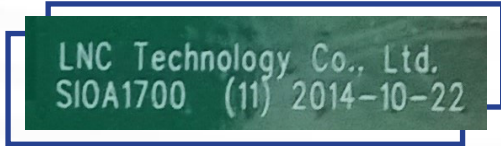
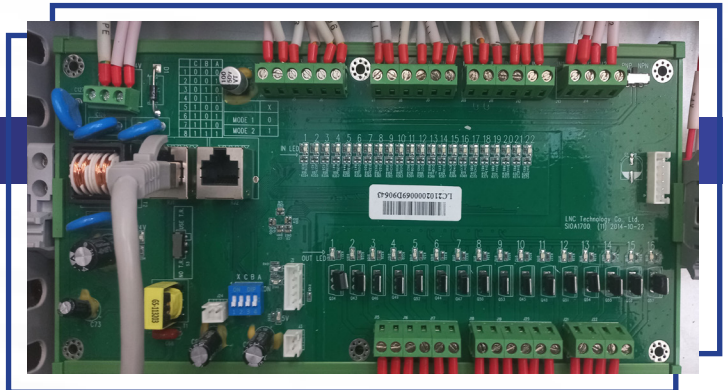
### Monitor

Agen XF190  
 Input: DC 12V 2,5A  
 Serial: AGTR2023081819P806



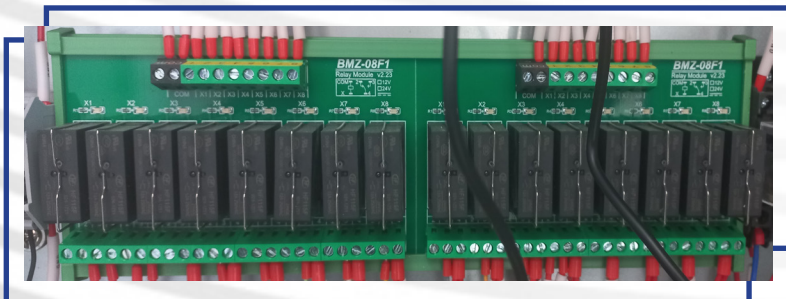
### I/O System Control Board

LNC Technology  
 SIOA1700(E)(11)  
 s/n: LC2102000069D90643

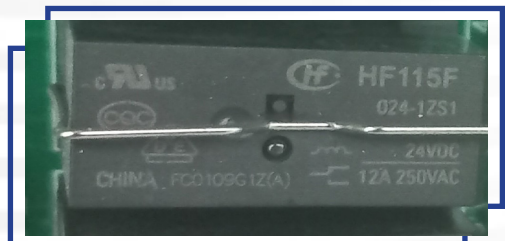


### Relay Module

Model: BMZ-08F1  
 Relay module v2.23 24V  
 2x boards x 8 channels (each)



Relay Unit  
 HF115F  
 024-2HS4  
 24VDC  
 8A 250VAC



### Servo Drivers (x4)

Model: Veichi IP20  
SD710-5R5A-PA

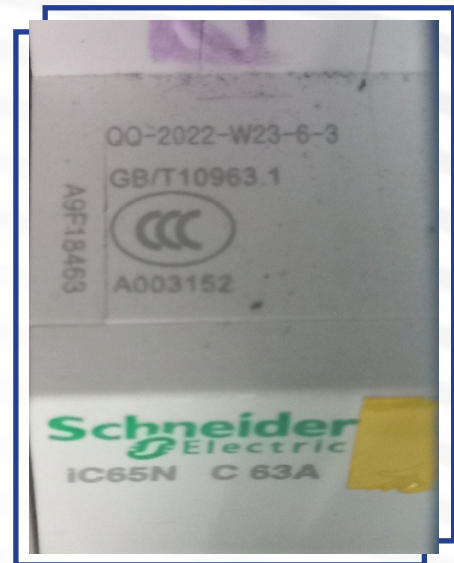
Input: 1 PH 200-240V 50/60Hz  
1 PH: 8,5A

Output: 3PH 0-240V 0-500Hz 5,5A  
S/N: 9120081106M4000002893337



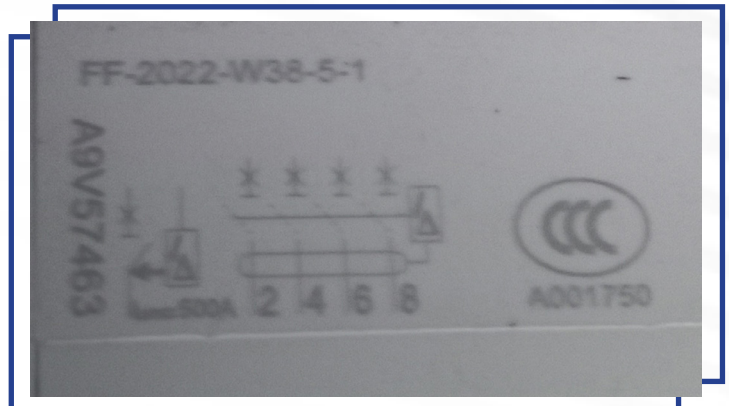
### Circuit Breaker

Model: Schneider Electric IC65, type IC65N  
C 63A  
A9F184453



Clip-on DIN rail mount:

Model: Schneider A9V57463 63A 240V 415V, trip sensitivity: 300mA



## Phase-Failure and Phase-Sequence Protective Relay

Model: Chint XJ3-D Rectifier type

690V      0.1-150A      50/60Hz

IEC 60947-4-1 International standard



## Three Pole Contactor (x4)

TeSys Schneider

(x3) LC1D25

3PH 220V 25A 50/60Hz

(x1) LC1D32

3PH 32A <= 690V AC 25-400 Hz

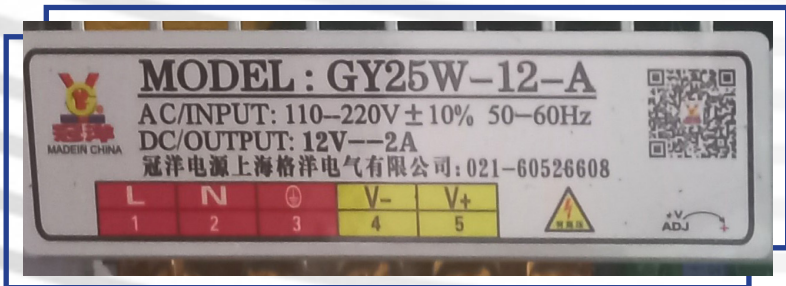


## 12V Power Supply

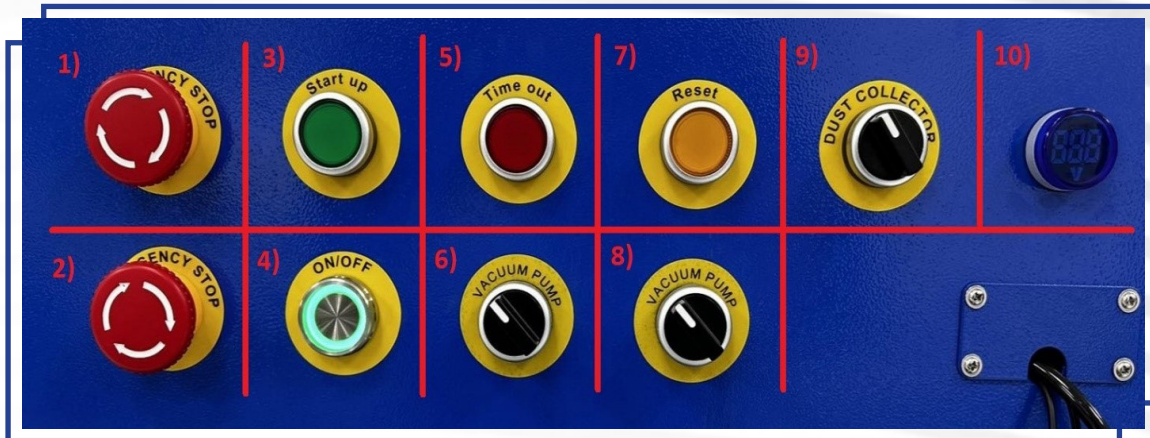
Model: GY25W-12-A

Input: 110-220V +/- 10% 50/60Hz

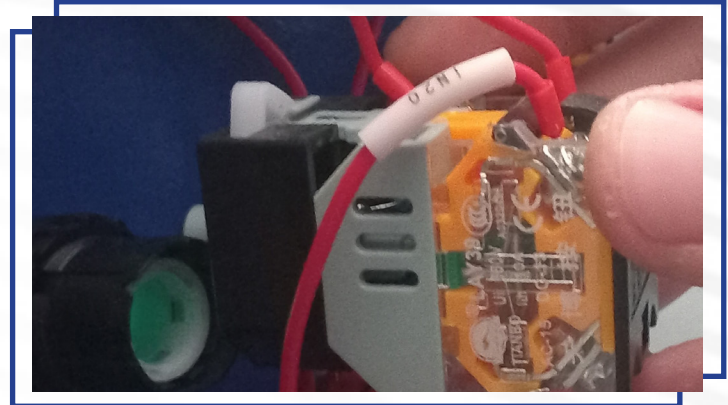
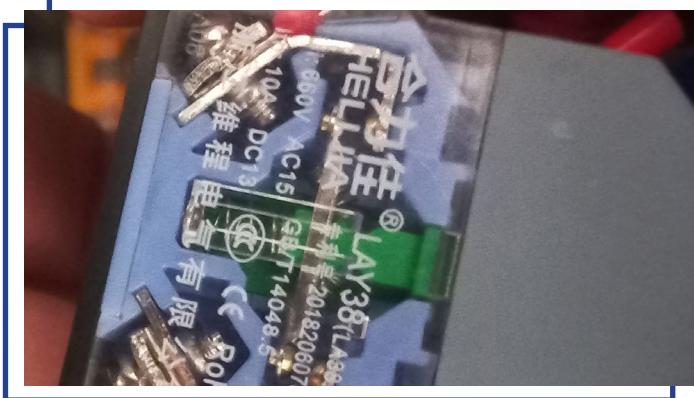
Output: 12V 2A



**Power Buttons**



1. LA38	AC660V	10A	GB/14048,5	
2. LA38	AC660V	10A	GB/14048,5	
3. TIANBO CHTBO LAY39	UI 660V		A032049	
4. HELJIA LAY38 LA38, LA39	UI 660V		GB/T 14048,5	201820607073,0
5. TIANBO CHTBO LAY39	UI 660V	10A	A032049	
6. TIANBO CHTBO LAY39	UI 660V	10A	A032049	
7. TIANBO CHTBO	UI 660V	10A	A32049	
8. TIANBO CHTBO LAY39	UI 660V	10A	A032049	
9. TIANBO CHTBO LAY39	UI 660V	10A	A32049	
10. AD16-22DSV	AC60-500V			



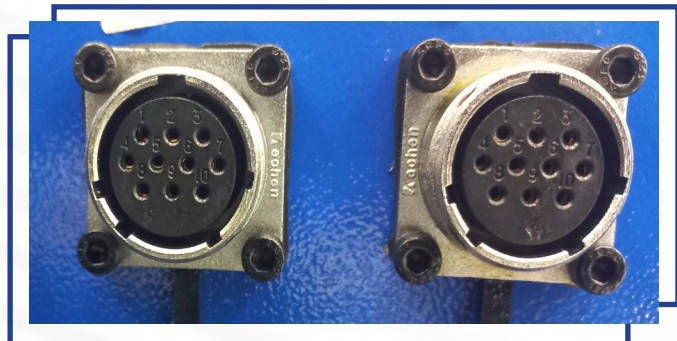
**Automatic oil dispenser**

DALOMA  
YS-2232-210X



**Side Panel Connectors**

Brand: Echen  
10 channels



**Vacuum Pump Flow Regulator**

2GH810-H27  
7.5kW  
320mBar



**Vacuum Pump Intake**

Hose diameter: 80mm



**Compressed Air Blow Gun**

AR-TS JX-05



**ER32 UM Collet Spanner**



**Loading wheel array**



**Helical Gear and Pinion Rack**

Height: 20mm  
 Width: 20mm  
 Angle: 30°



**Vacuum Pump Manometer/Negative Pressure Gauge**



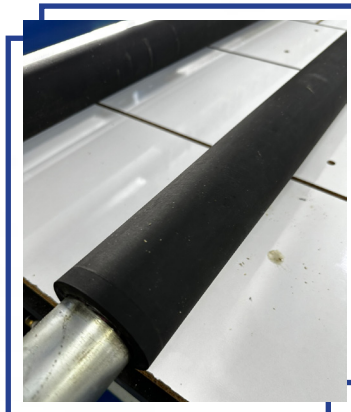
### Dust Collector Motor

Brand: Zhengzhou Huihao  
 Three Phase Asynchronous Motor  
 Model: FY132S1-2  
 Power: 5.5kW/11.1A 380V 50Hz  
 2900 rpm



### Rollers

Mounting shaft diameter: 20mm  
 Middle Shaft diameter: 50mm  
 Rubber Segment diameter: 70mm



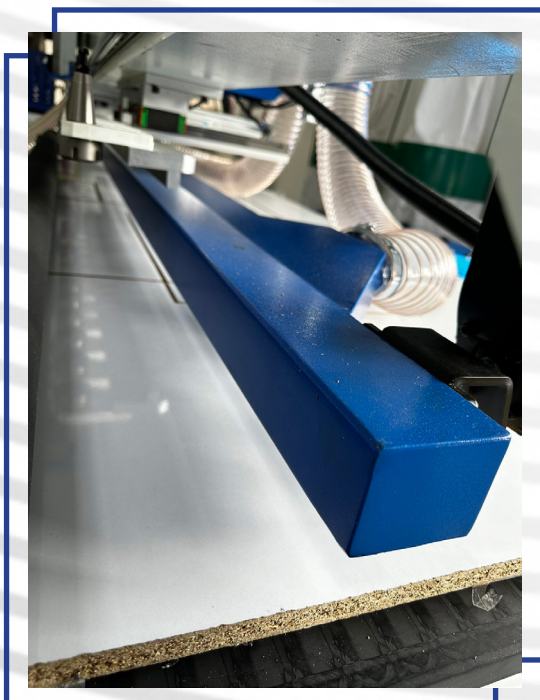
### Dust Collection Hose

Silicone with Copper Wire  
 Diameter : 150mm



### Dust Collection System (Gantry)

2100x65x30mm



### Tool Magazine Holder

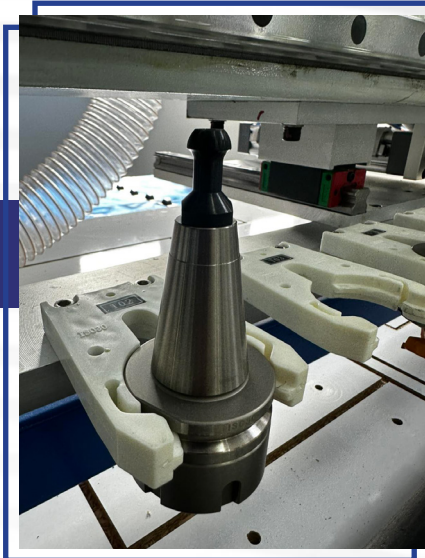
ISO30 standard



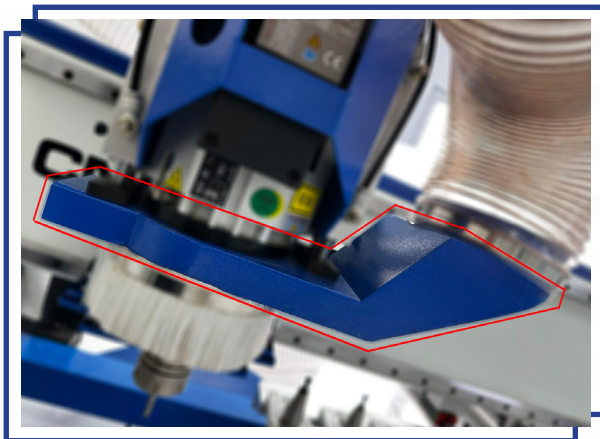


### Tool Holders for HQD ATC Tool Changer (Collet Chuck)

ISO30-ER32\_50L  
30000 RPM Max



### Dust Collection System (Spindle)



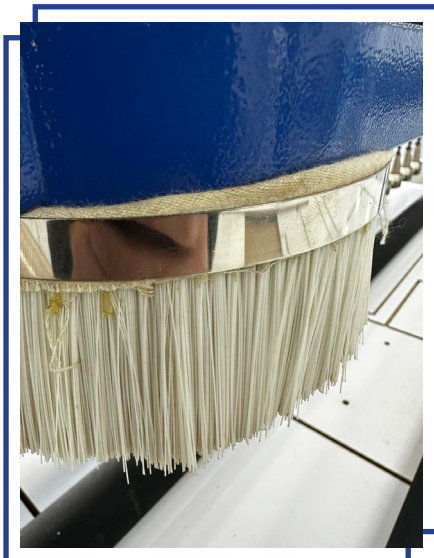
### Inner Vacuum System

Hose diameter: 50mm



### Spindle Head Dust Collection Brush

Diameter : 150mm  
Size: 45mm

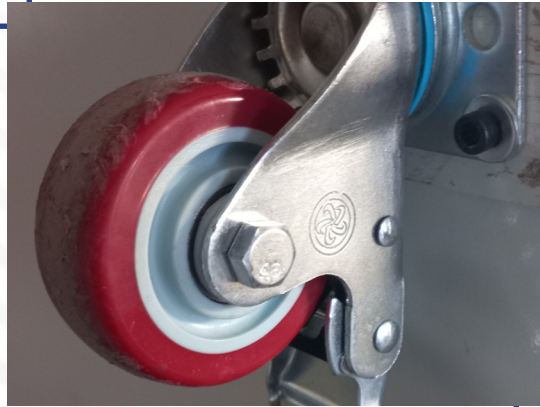


### Pillow Block Ball Bearing Housing

P204  
Inner Diameter: 20mm  
Outer Diameter: 45mm



Electrical cabinet wheels

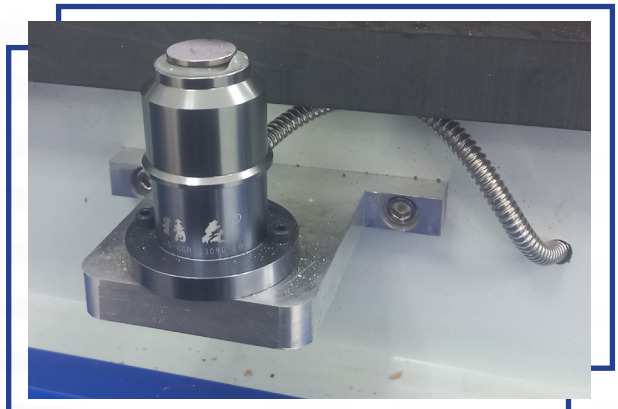


Generic Vacuum Zone Selection Handle



Electronic Auto Tool Length / Probing Sensor

Model: JS-66R

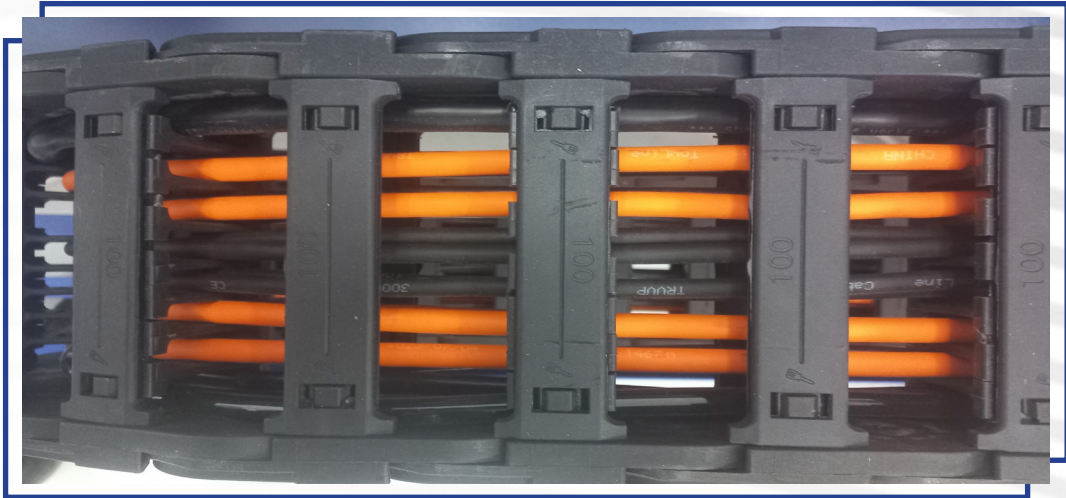


MPG Control Handle



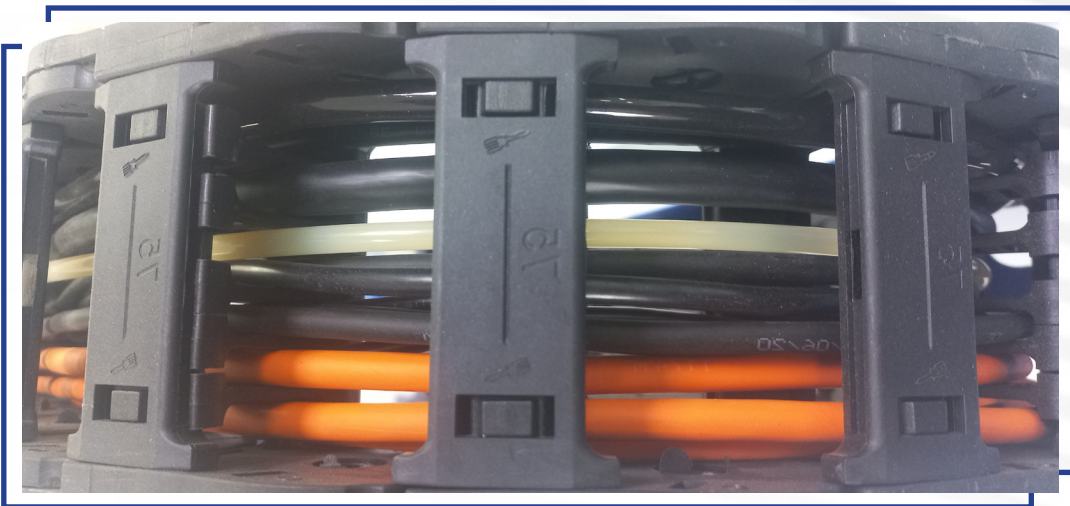
**Y Axis Cable Organizer**

100mm

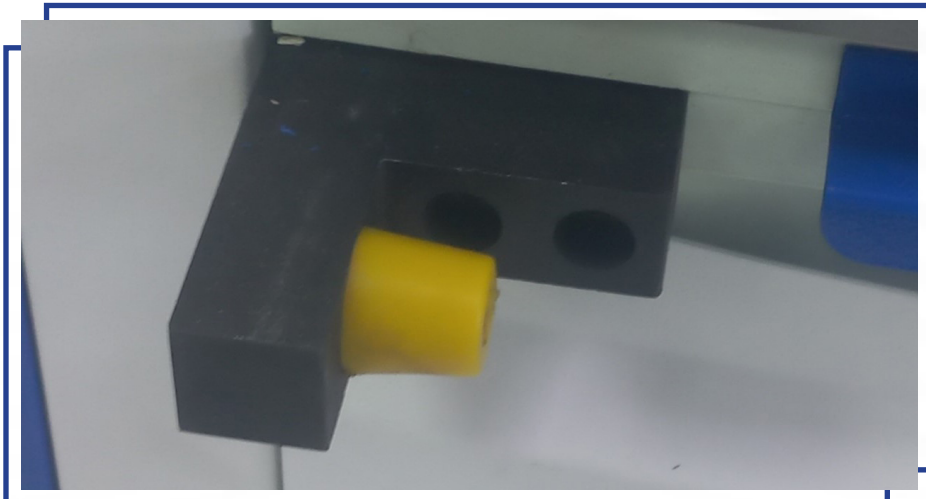


**Gantry Cable Organizer**

75mm



**Safety End Stop**



### Ball Screw Flexible Shaft Coupler Connector

Shaft Diameter: 22mm

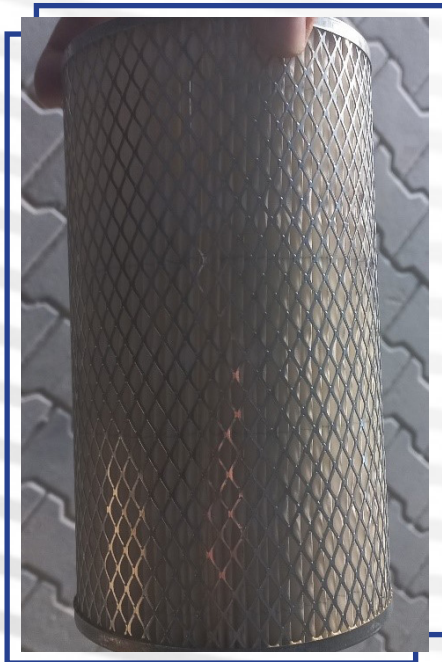


### Collet Chuck Nut

ER32 NUT  
2310

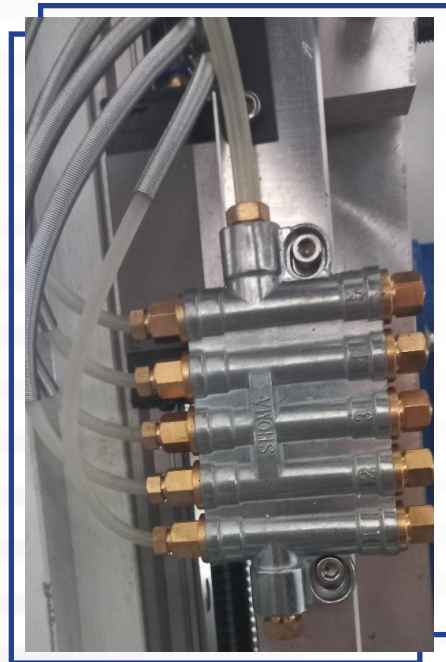


### Generic Vacuum Pump Intake Filter



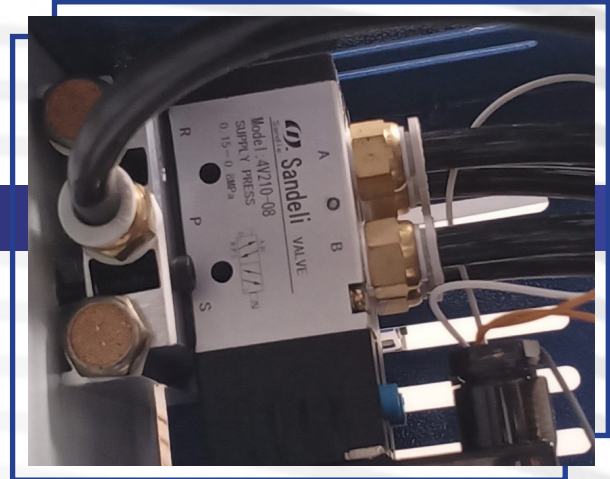
### Volumetric Oil Distributor Block

Brand: SHOMA  
Intake Diameter: 6mm tube  
Output Diameter: 4mm tube



**Air Valve**

Brand: Sandeli  
 Model: 4V210-08  
 0.15-0.8MPa



**Solenoid Valve (electromagnet)**

DC 24V                      4.0W  
 Voltage range: DC 21.6V-26.4V  
 IP65



**Alarm (status) Traffic Cone**

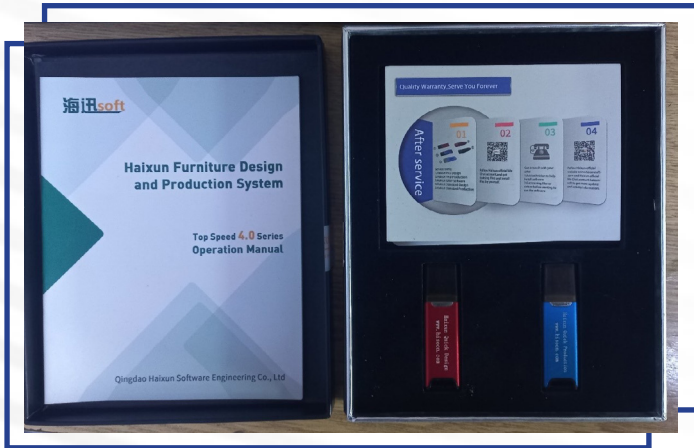
Model: DH50-3B  
 24V DC



**Locking/Tightening Collet Chuck Tool Holder**



**Haixun Speed Design & Haixun Speed Production USB Tokens**

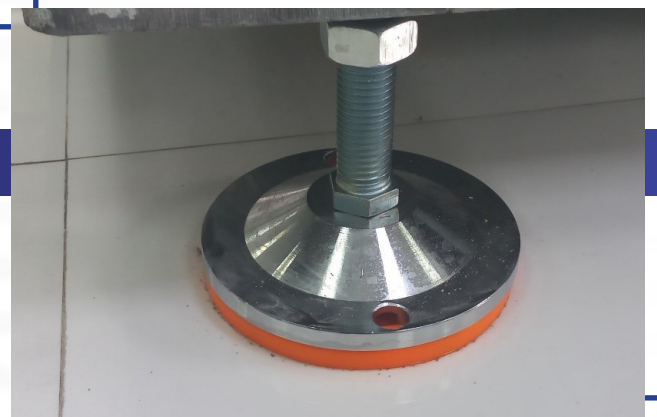


**Electrical Cabinet Ventilation Fans (x4)**

Brand: DOSSY  
150x150mm



**Anti-Shock, Anti-Vibration Leg Stand**



**Z-Axis Limit Switch**

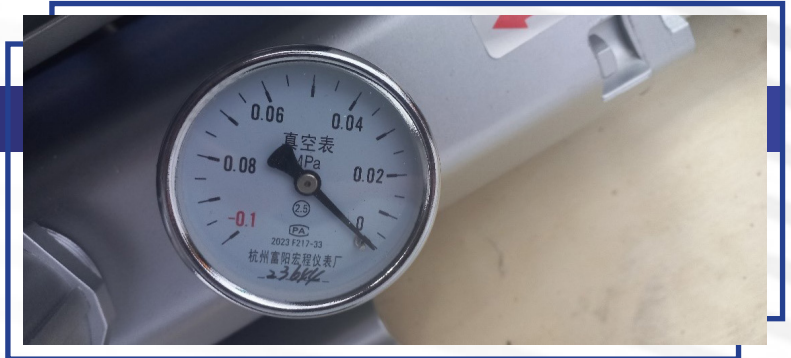
Brand: HeBen  
Model: DI-Q1805PK  
Voltage: DC 10-30V  
Distance threshold: 5mm  
Current: 200mA  
Output: PNP-NO



Vacuum Pump Exhaust

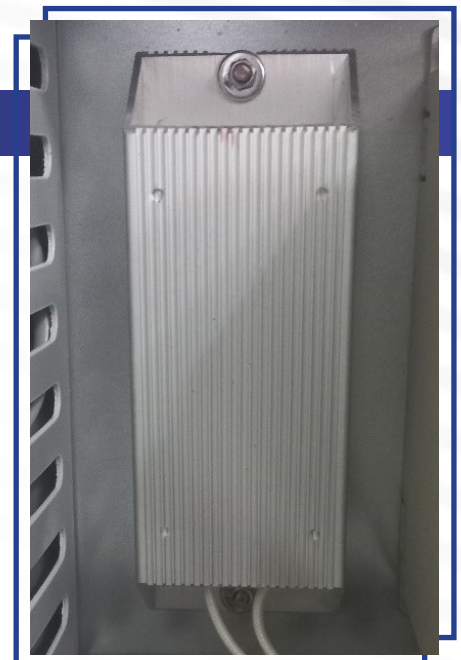
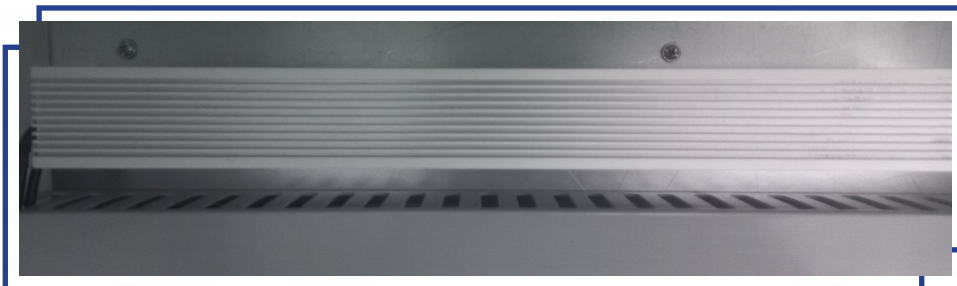


Vacuum Pump Manometer



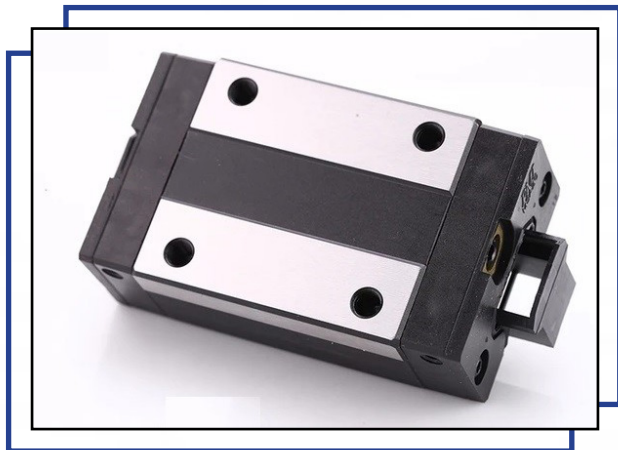
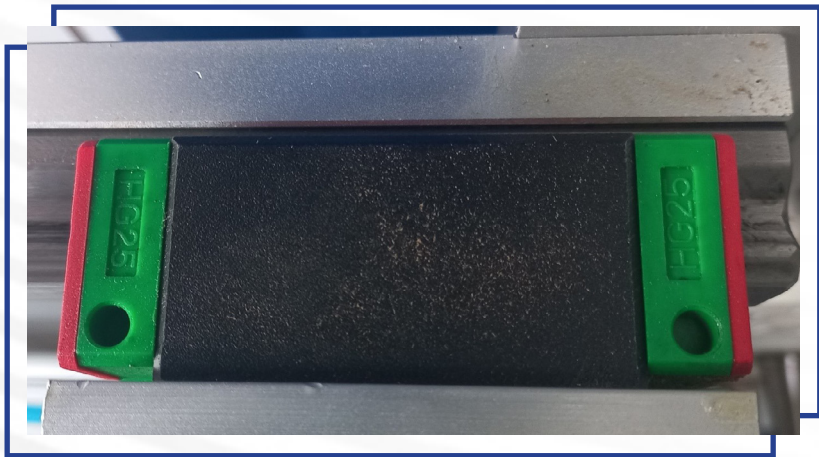
Electrical Cabinet Resistors

Large Resistor (x1)  
Small Resistor (x4)



**Linear Rail Guidesduction**

X – Axis : HGH25CA (x2)  
 Y – Axis : HGH30CA (x2)  
 Z – Axis : HGH25CA (x2)  
 ATC: HG25 (x2)



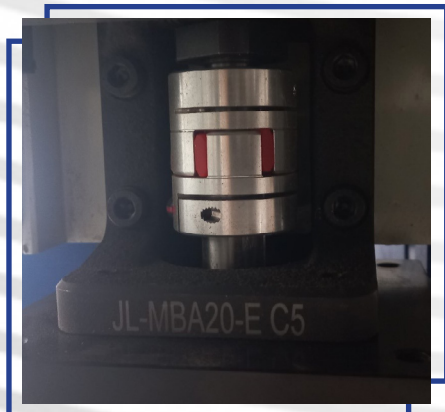
**Z-Axis Cable Organizer**

75mm



**Z-Axis Threaded Screw Rod & Mounting Brackets**

Threaded Screw Rod Diameter: 25mm  
 Mounting Bracket : BK20





## Vacuum Bed

Dimensions: 2100mm x 2800mm x 28mm



## Rear Button Panel

Position: CHTBO	TIANBO	UI 660V	10A	A32049
Start Up: CHTBO	TIANBO	LAY39 UI 660V		A032049
Emergency Stop: LA38	AC 660V	10A		





#### КОНТАКТ

☎ Информации: +389 70 215 994

☎ Продажен салон: 02 3095 002

✂ Сервис: +389 71 270 963

✉ Е-маил: [info@radek.com.mk](mailto:info@radek.com.mk)

🌐 Вебсајт: [www.radek.com.mk](http://www.radek.com.mk)

📍 Адреса: Јадранска Магистрала 716

#### РАБОТНО ВРЕМЕ

Пон.-Пет.: 09:00-17:00

Саб.: 09:00-14:00



GOOGLE MAPS:  
RADEK WOODWORKING  
MACHINES



**Web**

[www.radek.com.mk](http://www.radek.com.mk)



**Facebook**

[radek-woodworking machines](https://www.facebook.com/radek-woodworking-machines)



**Instagram**

[radek\\_woodworking\\_machines](https://www.instagram.com/radek_woodworking_machines)



**Startuvaj.mk**

[www.startuvaj.mk](http://www.startuvaj.mk)



**YouTube**

[radek woodworking machines](https://www.youtube.com/radek-woodworking-machines)

**WOODWORKING AND  
METALWORKING MACHINES**