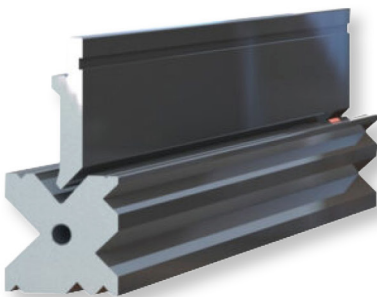




# HYDRAULIC PLATE PRESS BRAKE

EFFICIENT, PRECISE AND STABLE MACHINE



**PREMIUM QUALITY  
3 YEARS WARRANTY  
AND UNLIMITED SUPPORT**

	RK40T-250-PRO	RK70T-250-PRO	RK70T-320-PRO	RK100T-250-PRO	RK100T-320-PRO	RK100T-400-PRO	RK135T-250-PRO	RK135T-320-PRO
Bending force	400kN	700kN	700kN	1000kN	1000kN	1000kN	1350kN	1350kN
Bending length	2500mm	2500mm	3200mm	2500mm	3200mm	4000mm	2500mm	3200mm
Column distance	2050mm	2000mm	2500mm	2000mm	2500mm	3150mm	2000mm	2500mm
Throat depth	300mm	300mm	300mm	300mm	300mm	400mm	300mm	300mm
Ram stroke	100mm	100mm	100mm	130mm	130mm	130mm	130mm	130mm
Max. opening height	320mm	390mm	390mm	390mm	390mm	390mm	390mm	390mm
Ram down speed	9.6m/min	9.6m/min	9.6m/min	9.6m/min	9.6m/min	9.6m/min	9.6m/min	9.6m/min
Ram back speed	8.4m/min	8.4m/min	8.4m/min	8.4m/min	8.4m/min	8.4m/min	8.4m/min	8.4m/min
Ram working speed	≈0-1 m/min	≈0-1 m/min	≈0-1 m/min	≈0-1 m/min	≈0-1 m/min	≈0-1 m/min	≈0-1 m/min	≈0-1 m/min
Work-price linearity	0.2mm	0.2mm	0.2mm	0.2mm	0.2mm	0.2mm	0.2mm	0.2mm
Max. back gauge distance	500mm	500mm	500mm	500mm	500mm	500mm	500mm	500mm
Front sliding arms	2PCS	2PCS	2PCS	2PCS	2PCS	2PCS	2PCS	2PCS
Bending angle accuracy	±50'	±50'	±50'	±50'	±50'	±50'	±50'	±50'
Back gauge finger stopper	2PCS	2PCS	3PCS	2PCS	3PCS	4PCS	2PCS	3PCS
Main motor	4kW	5.5kW	5.5kW	7.5kW	7.5kW	7.5kW	7.5kW	7.5kW
Control system	E21	E21	E21	E21	E21	E21	E21	E21
Max. Bending tickness MS	2mm	4mm	3mm	6mm	5mm	3mm	8mm	6mm
Max. Bending tickness SS	1mm	2mm	1mm	2mm	2mm	1mm	4mm	2mm
Machine size length	2700mm	2600mm	3300mm	2600mm	3300mm	4100mm	2600mm	3300mm
Machine size width	1800mm	1250mm	1250mm	1330mm	1350mm	1350mm	1350mm	1550mm
Machine size height	2225mm	2250mm	2250mm	2350mm	2350mm	2350mm	2350mm	2350mm
Packing size length	2850mm	2850mm	3500mm	2850mm	3600mm	4400mm	2850mm	3600mm
Packing size width	1320mm	1400mm	1450mm	1320mm	1500mm	1500mm	1500mm	1850mm
Packing size height	2300mm	2300mm	2300mm	2300mm	2450mm	2400mm	2400mm	2400mm
Weight	4.3T	4.4T	5T	6.5T	7.5T	9T	7T	8T



### ESTUN E21

- Positioning control of back gauge.
- One-way and two-way positioning function, effectively eliminating the screw gap.
- Retreat escape function, automatic search reference function.
- One-button backup and restore function, rapid location teaching function.
- 40 multi-step program storage space, each program has 25 steps.
- Power protection function.



### ESTUN 300P

- Control functions, to support the X, Y, R axis servo control C axis hydraulic/mechanical compensation two modes are optional.
- Precise point of programming calculation function, built-in mold base and material list, promoted angle calculation accuracy.
- The standard USB interface, which can realize the parameters, the program a key online backup and system software upgrade.



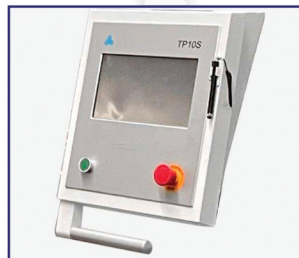
### DELEM DA-41T

- Ultra-high resolution 7" widescreen TFT LCD display
- Industrial-grade PCT tempered glass touch screen
- Ergonomic design for easy operation
- High strength and scratch resistance, can be operated with gloves
- Each nuance highlights the high-end level
- The shell is designed based on panel installation, easy to integrate
- Perfect combination with current bending machine design style.

### CYBELEC CT8



- 8" color LCD display, touch screen, icon recognition function
- The "EasyBend" page is processed with easy single bending
- The fully efficient bending programming can meet the needs of mass production and processing
- Automatically calculate bending angle, main pressure and deflection compensation
- Automatic calculation of bending data
- Angle, back gauge correction



### TP 10S

- Cylinder stroke (Y axis) control
- Back gauge (X axis) control
- Angle programming
- Tool programming
- Retract function
- Up to 220 programs
- Servo control
- Up to 24 bends per program



RK135T-400-PRO	RK165T-250-PRO	RK165T-320-PRO	RK165T-400-PRO	RK200T-320-PRO	RK200T-400-PRO	RK250T-250-PRO	RK250T-320-PRO	RK250T-400-PRO	RK300T-320-PRO	RK300T-400-PRO
1350kN	1650kN	1650kN	1650kN	2000kN	2000kN	2500kN	2500kN	2500kN	3000kN	3000kN
4000mm	2500mm	3200mm	4000mm	3200mm	4000mm	2500mm	3200mm	4000mm	3200mm	4000mm
3150mm	2000mm	2500mm	3150mm	2500mm	3500mm	2000mm	2500mm	3200mm	2500mm	3200mm
400mm	300mm	300mm	400mm	300mm	400mm	300mm	300mm	400mm	400mm	400mm
130mm	160mm	160mm	160mm	175mm	175mm	250mm	250mm	250mm	250mm	250mm
390mm	390mm	390mm	390mm	390mm	390mm	390mm	390mm	390mm	420mm	420mm
9.6m/min	8.4m/min	8.4m/min	8.4m/min	7.2m/min	7.2m/min	7.2m/min	7.2m/min	7.2m/min	6.6m/min	6m/min
8.4m/min	7.2m/min	7.2m/min	7.2m/min	6.6m/min	6.6m/min	6.6m/min	6.6m/min	6.6m/min	6m/min	5.4m/min
≈0-1 m/min	≈0-1 m/min	≈0-1 m/min	≈0-1 m/min	≈0-1 m/min	≈0-1 m/min	≈0-1 m/min	≈0-1 m/min	≈0-1 m/min	≈0-1 m/min	≈0-1 m/min
0.2mm	0.2mm	0.2mm	0.2mm	0.2mm	0.2mm	0.2mm	0.2mm	0.2mm	0.2mm	0.2mm
500mm	500mm	500mm	500mm	500mm	500mm	500mm	500mm	500mm	500mm	500mm
2PCS	2PCS	2PCS	2PCS	2PCS	2PCS	2PCS	2PCS	2PCS	2PCS	2PCS
±50'	±50'	±50'	±50'	±50'	±50'	±50'	±50'	±50'	±50'	±50'
4PCS	2PCS	3PCS	4PCS	3PCS	4PCS	2PCS	3PCS	4PCS	3PCS	4PCS
7.5kW	11kW	11kW	11kW	15kW	15kW	18.5kW	18.5kW	18.5kW	22kW	22kW
E21	E21	E21	E21	E21	E21	E21	E21	E21	E21	E21
5mm	10mm	8mm	6mm	10mm	8mm	15mm	12mm	10mm	14mm	12mm
2mm	5mm	3mm	2mm	5mm	3mm	8mm	6mm	5mm	7mm	6mm
4100mm	2600mm	3300mm	4100mm	3300mm	3300mm	2600mm	3300mm	2800mm	3300mm	4100mm
1550mm	1550mm	1550mm	1650mm	1700mm	1700mm	1800mm	1800mm	1800mm	1800mm	1900mm
2350mm	2350mm	2350mm	2350mm	2650mm	2650mm	2800mm	2800mm	2900mm	3050mm	3050mm
4400mm	2850mm	3600mm	4400mm	3600mm	4400mm	2850mm	3600mm	4400mm	3700mm	4500mm
1850mm	1850mm	1850mm	1850mm	2000mm	2000mm	2200mm	2200mm	2200mm	2200mm	2200mm
2400mm	2400mm	2400mm	2400mm	2650mm	2650mm	2800mm	2800mm	2900mm	3350mm	3350mm
9.5T	7.5T	9.5T	10.5T	10T	11.5T	9T	11T	12T	17T	19T

## TORSION BAR

Only this machine uses a pressure-controlled bending method that is faster and two or three times more productive than traditional pressure holding method in other factories. Our machine uses two slide bases to connect the cylinders, the gap only has 0.5mm. Other factories use connecting arms and fix them with screw, the gap will slowly become large.

Solid cylinders are made of solid, monolithic material with a relatively simple structure that reduces possible vibration and loosening problems between components, making them more stable and reliable during operation. Many manufacturers use hollow pistons, but our machine uses solid pistons, which are heavier, more stable and more durable.



**Our-two slide bases**



**Other-connecting arms**



**Our-solid pistons**



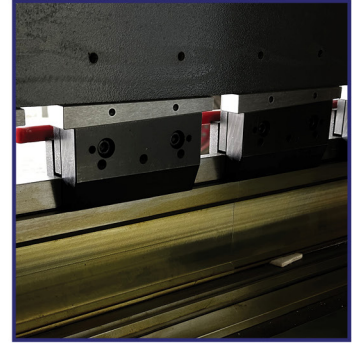
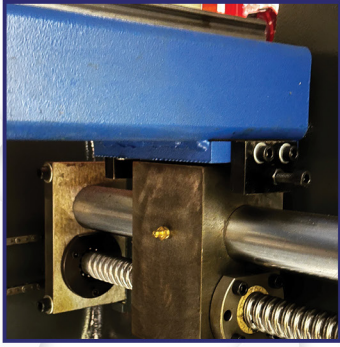
**Other-hollow pistons**

## ECONOMIC SENSE AND USER-FRIENDLY

- ➔ Low investment cost
- ➔ Strong rigid structure
- ➔ Economic machine
- ➔ Easy tool replacement



# DETAILS



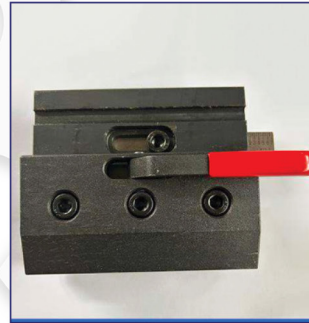
## STANDARD EQUIPMENT



Hydraulic valve



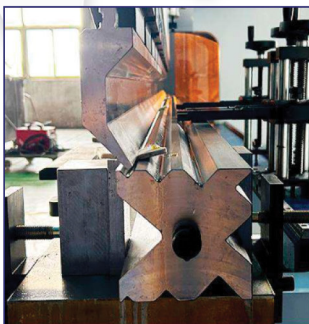
Ball screw



One-key release fast clamp



Electric components



Standard punch and die



Manual R-axis



Adjustable Z stoppers



SIEMENS main motor

## OPTIONAL EQUIPMENT

- Light curtain
- MSD Laser protection
- Tooling cabinet
- Manual crowning system



Light curtain



Laser protection



Crowning system