



RK-S65-PRO

MULTI RIP SAW

FAST, PRECISION AND SAFE

**BEST
SELLER**



**1 YEAR WARRANTY
AND UNLIMITED SUPPORT**



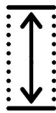
Machine total power
11.55kW



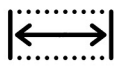
Voltage
380V



Feeding speed
12.5m/min; 25m/min



Processing length
≥500mm



Processing width
≤500mm



Processing thickness
12-60mm



Extra Wood Conveyor
Optional, can removable



Frequency
50Hz



Machine size
1640x940x1095mm



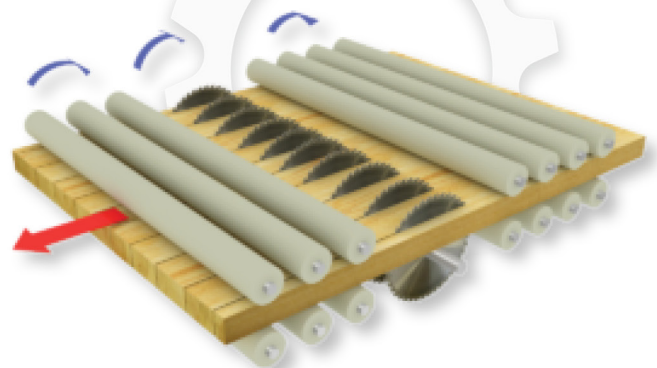
Packing size
1800x1050x1250mm



Weight
550kg

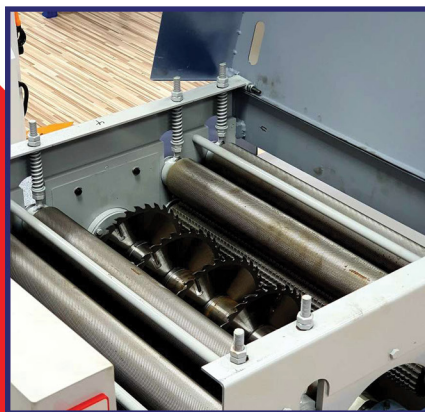


Lasers that show the position of the saws

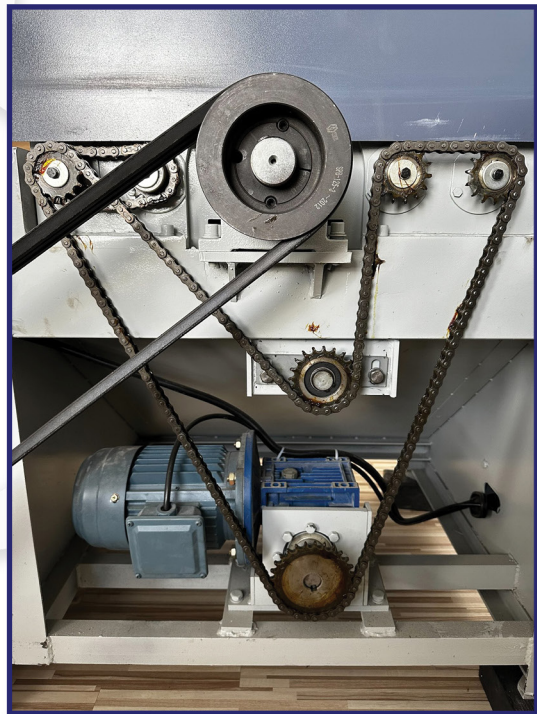
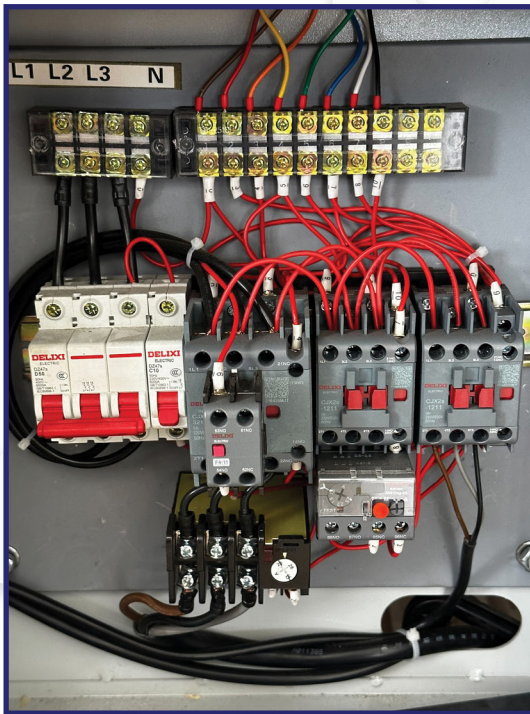




11 kW
Industrial motor



DETAILS



- Multi rip saw with high performance and high precision, mainly used for solid wood, density board, particle board, wood composite flooring, laminate, panel furniture, wooden packaging box, photo frame...
- The precision saw shaft ensures the smoothness and straightness of the cutting material.

YouTube CHECK UP OUR YOUTUBE CHANNEL FOR VIDEO

