



RK-400-PREMIUM

AUTOMATIC SIDE POLISHING MACHINE

PERFECT POLISHING FINISH FOR MDF, WOOD, PLYWOOD
AND COLORED MDF



OSCILLATING



**WITH TWO
ROLLERS**

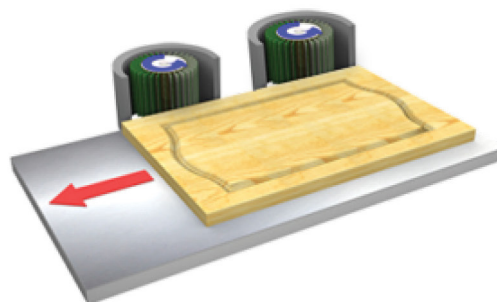


**1 YEAR WARRANTY
AND UNLIMITED SUPPORT**

Rollers	2 Brush rollers
Total power	1.87kW
Roller motor	0.75*2kW
Lifting motor	-
Conveying motor	0.37kW
Roller height	200/200
Roller diameter	300mm
Sandpaper grades	320/320
Working length	No limit
Working thickness	5-200mm
Working height	≥80mm
Feeding speed	5-20m/min
Sandpaper/Roller	24 strips
Brushes/Roller	24 strips
Machine size	2030x840x1230mm
Packing size	2130x940x1380mm
Weight	470kg

PURPOSE

The machine is designed for automatic grinding of straight and profile edges of furniture facades and other furniture parts. Sanding is carried out on MDF products, solid wood blanks, veneered parts, on the ground and on applied paintwork (intermediate sanding)

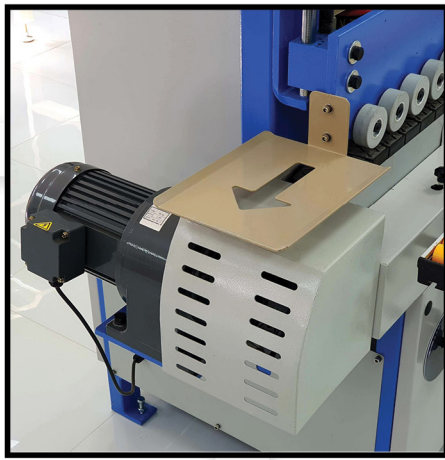




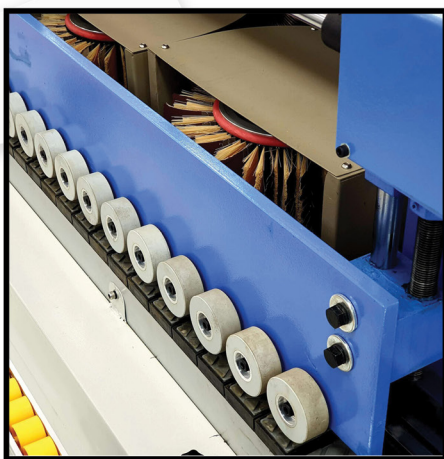
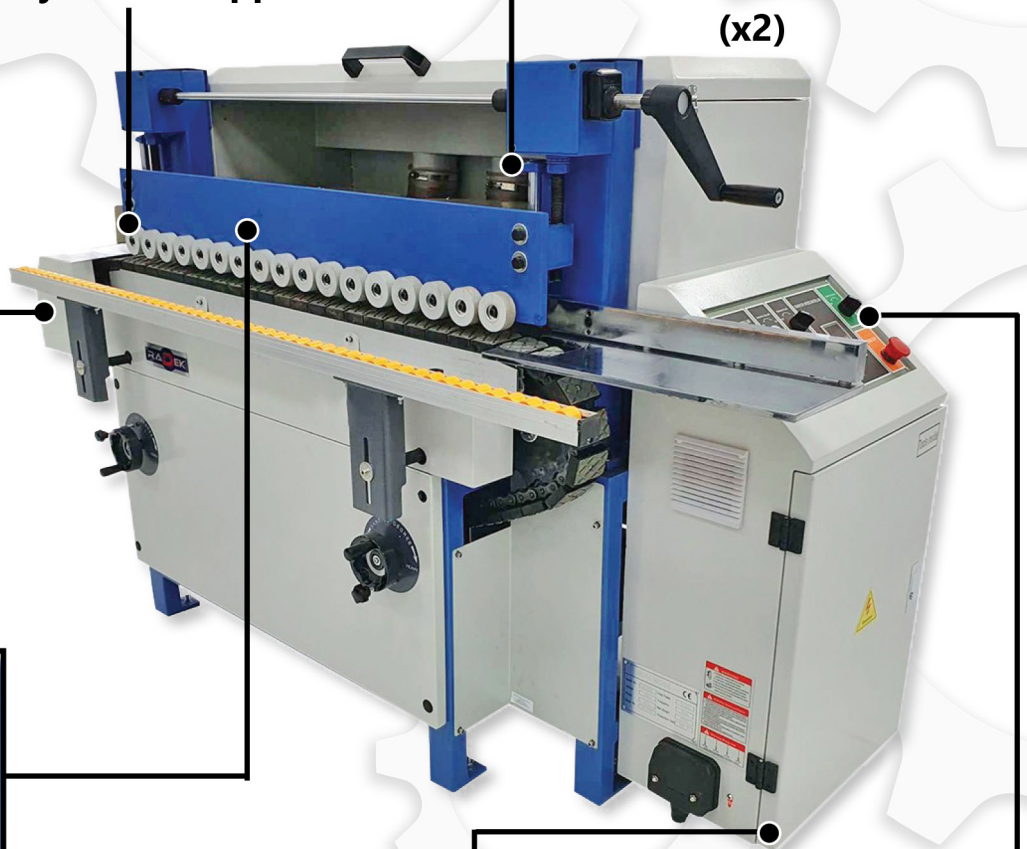
Adjustable support roller



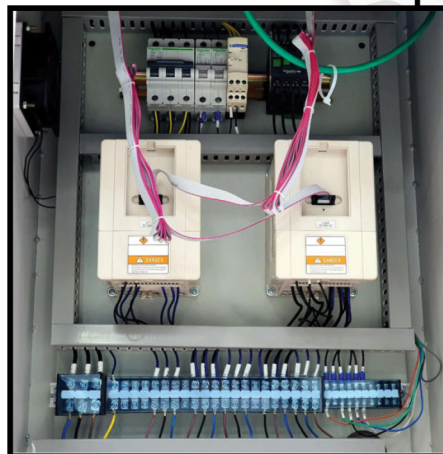
300mm roller diameter (x2)



Massive construction with premium quality



Feed conveyor stable



Electrical components



Speed and rotation controller

DETAILS

- Independent adjustment of the rotation speed of each node.
- Convenient and intuitive control panel.
- The parts are supplied by a chain conveyor either rubber-coated links.
- Reliable fixation of the part by upper pressure rollers along the entire length of the feeding conveyor.
- Smooth adjustment of the speed of the feeding conveyor (inverter).
- Well-thought-out suction: each sanding unit is equipped with a suction connection.
- Extension of the conveyor with rollers: eliminates sagging of large workpieces.



YouTube CHECK UP OUR YOUTUBE CHANNEL FOR VIDEO

