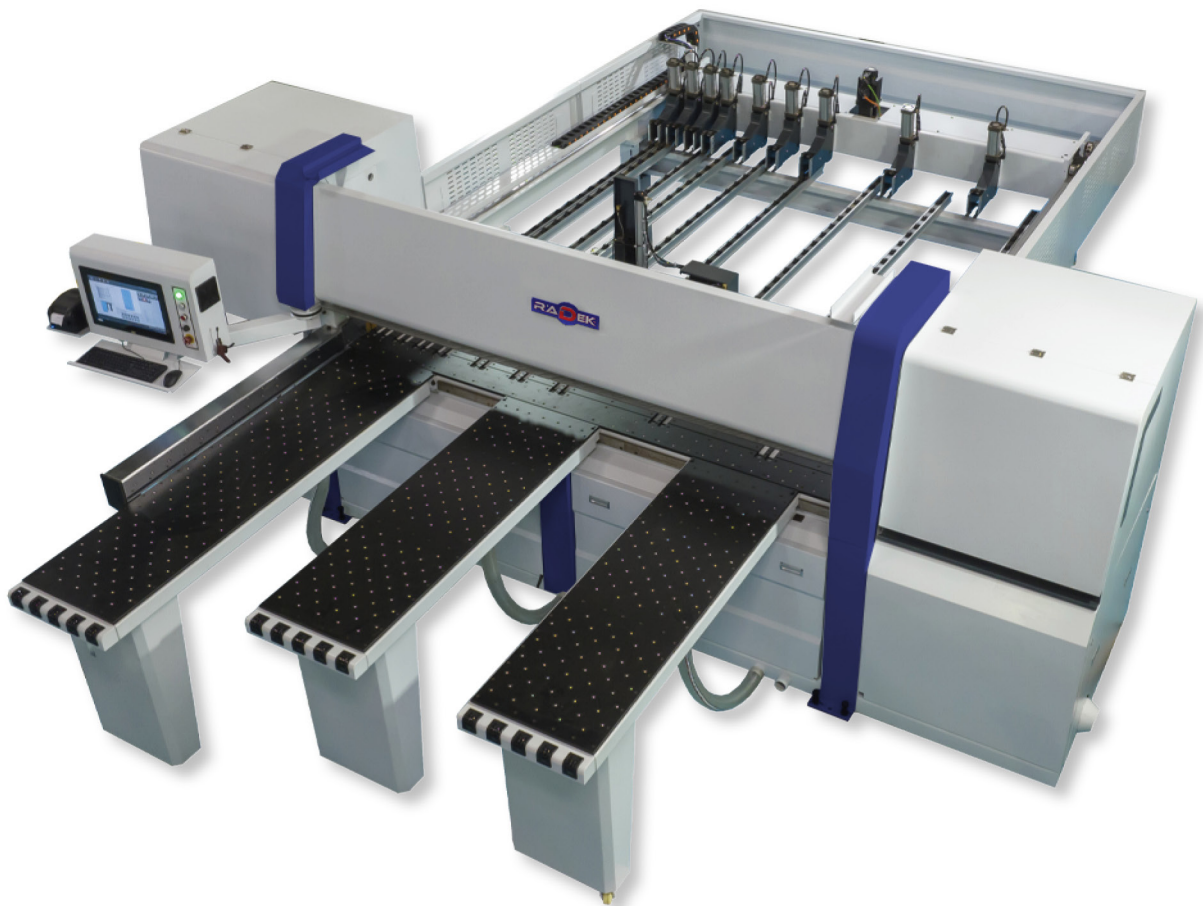




RK-320-PREMIUM

CNC PANEL SAW

IT ENSURE EVERY REQUEST WITH MAXIMUM PERFORMANCE
AND CAN MEET LARGE PRODUCTION CAPACITIES



**PREMIUM QUALITY
2 YEARS WARRANTY
AND UNLIMITED SUPPORT**

Max.sawing cutting length	3200mm (optional 4300mm)
Max.sawing cutting width	3200mm (optional 4300mm)
Max.sawing thickness	120mm
Positioning method	Automatic
Gripper servo	2.0kW
Sawing precision	±0.1mm
Main saw motor power	18.5kW
Main saw outer diameter	450mm
Main saw inner diameter	75mm
Scoring saw motor power	2.2W
Scoring saw outer diameter	200mm
Scoring saw inner diameter	50mm
Scoring speed	0-80m/min
Return speed	100m/min
Air pressure	0.6-0.8Mpa
Total install power	30.5kW
Front loading air floatation table	4kW
Machine size	5600x6800x1900mm
Packing size	5500x1330x1900mm 4050x600x1650mm
Weight	5800kg 7200kg

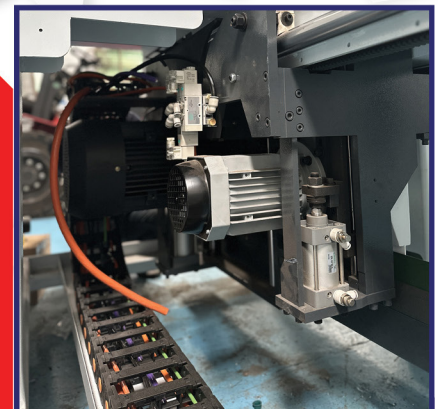
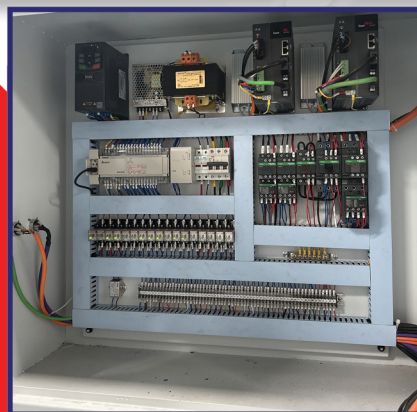
PREMIUM

Precision

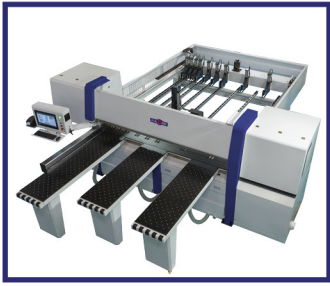
Quality

Stability

Performance

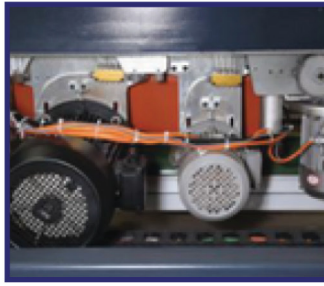


The CNC panel saw is used at enterprises working both on individual orders and in large-scale and mass production for high-quality of material with frequent changes in cutting patterns. Under difficult working conditions, it is used in serial furniture and joinery production for the manufacture of cabinet furniture.



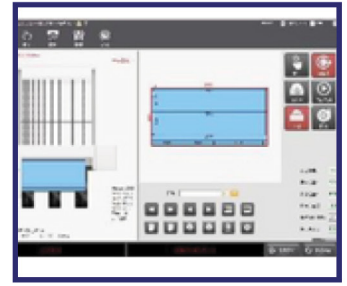
MAIN STRUCTURE

Select high-quality steel, adopt high density welding technology and annealing treatment to effectively ensure the stability and service life of the main body.



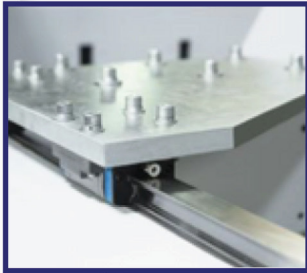
SAW CARE DEVICE

The saw base is guided by double guide rails, the sawing path is straight, the precision is high, the load is small, the rack and pinion drive, suitable for dusty environments, and the accuracy is more stable. Servo driven motor.



OPERATION INTERFACE

The panel display interface is simple and easy to understand, and the control method is safe and reliable. Perfect guided operation and fault alarm removal prompts, can edit the required sawing plan, and can simulate sawing.



PRECISION LINEAR GUIDE

Adopt German SLM steel belt square linear guide rail, low noise design, high precision, smooth running and durable, long service life.



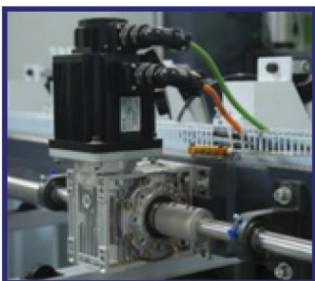
MAGNETIC INDUCTION DEVICE

The closed-loop precision compensation of German electronic ruler is selected, the compensation tolerance is plus or minus 0.02mm, and the high-precision imported gear rack feeding walking mechanism.



ELECTRICAL CONTROL SYSTEM

Adopt Taiwan FATEK PLC large-capacity storage and high-speed processing capability, stable and reliable.



SERVO DEVICE

Driven by INVT high-performance servo motor, it can execute control commands quickly and accurately to ensure efficient cutting.



FEED AIR FLOATATION TABLE

The ball-type air-floating workbench is used for easy feeding.



FEEDING CLAMP DEVICE

High-performance pneumatic feeding clamps are driven and positioned by precision servos. With double clamp.

ACCESSORIES BRAND

Control signal switch

Germany/Schneider



PLC

Taiwan / FATEK



Inverter

INVT



Display screen

Jikowi



Contactors

Germany/Schneider



Pneumatic Components

W pneumatic



Electromagnetic valve

Taiwan/AirTAC



Motor

Igarashi



Servo control system

INVT



Linear Guides

Germany/SLM



In the cutting area, tables with an air cushion are also installed, which greatly facilitates the work with small parts and protects them from damage.

The programmable pusher is equipped with pneumatic grips, which guarantees reliable fixation of the workpiece package. Double grips.



Side stops precisely position narrow strips along the side ruler when cutting them into finished parts (optional).

The special design of the grippers does not damage the material during its fixation and movement.