



RK-1600-PRO

SLIDING TABLE SAW

ERGONOMIC DESIGN WITH POWERFUL MOTOR

**BEST
SELLER**



**Manual rise/fall
and tilt adjustment
(0-45°)**



**PREMIUM QUALITY
2 YEARS WARRANTY
AND UNLIMITED SUPPORT**

Dimensions of the sliding table	1600x375mm
Cutting length	1500mm
Cutting height	75mm
Diameter of the main saw	300mm
Diameter of scoring saw	120mm
Speed of the main knife	4000/6000rpm
Speed of front blade	8000rpm
Main spindle diameter	30mm
Diameter of the second spindle	20mm
Main saw power	4.0kW
Scoring saw power	0.75kW
Main tilt angle of the blade	45°~90°
Machine size	1600x2450x900mm
Packing size	1120x1250x980mm 430x1830x260mm
Weight	450kg

Massive bed

The machine bed is welded, has a rigid spatial structure, and also has a significant mass, comparable to machines with longer carriages. The weight of the frame is sufficient to ensure cutting accuracy and durability of the machine. The frame undergoes an annealing process to relieve internal stress in the welds.

Roller carriage

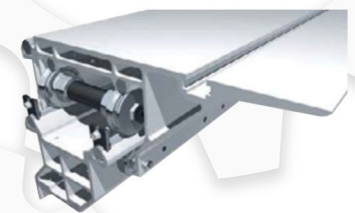
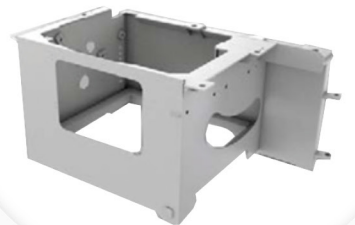
Steel cylindrical guides paired with high-precision rollers provide the highest stability and cutting quality. The practice of major manufacturers shows that today this type of carriage is the most reliable, durable and requires virtually no maintenance.

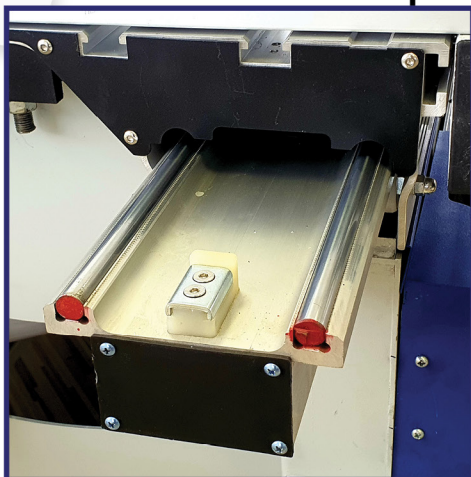
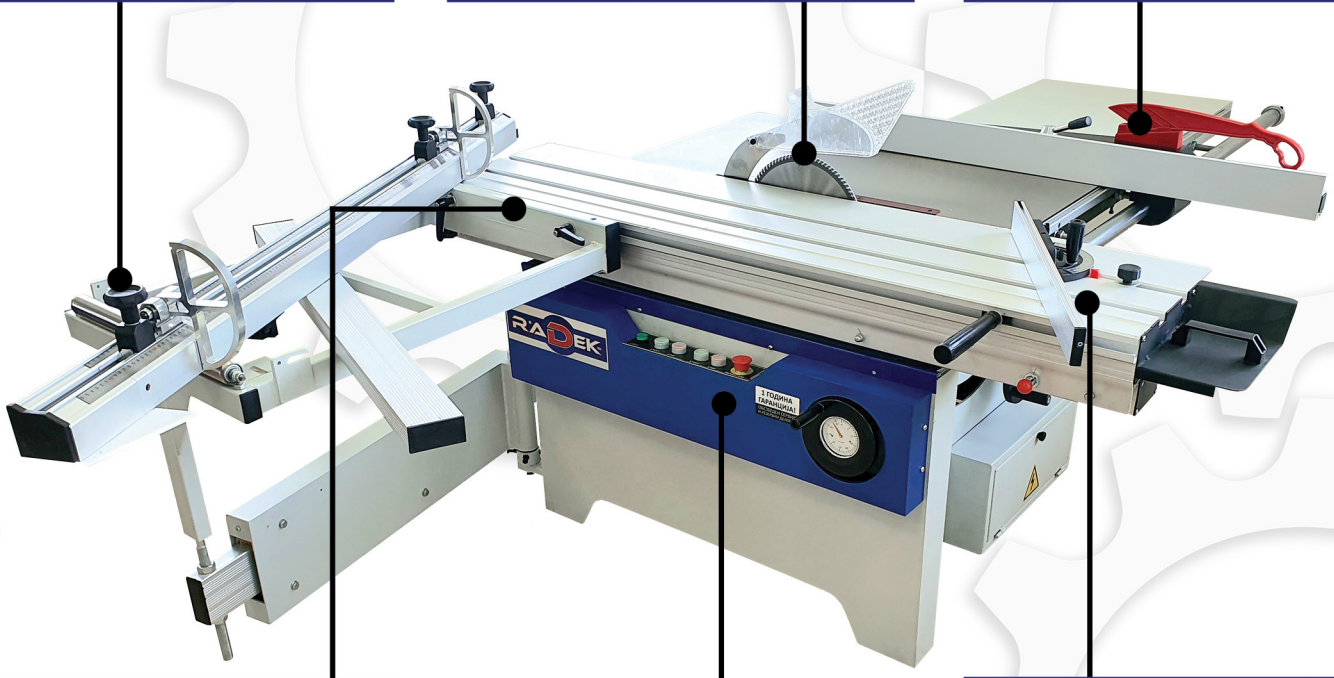
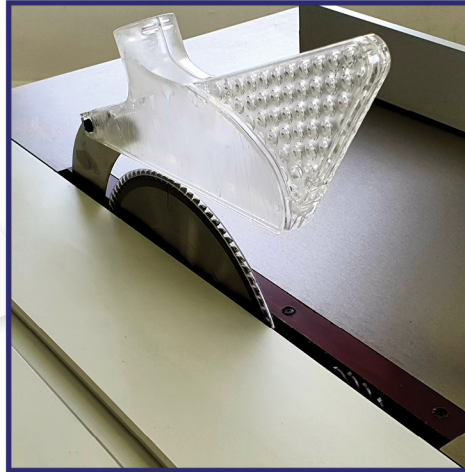
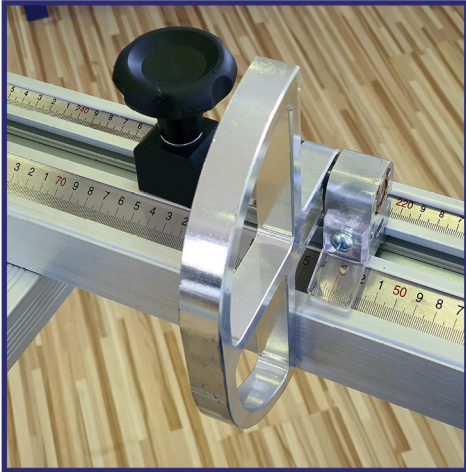
Saw protection

The upper guard of the saw with the ability to connect to the aspiration system.

Ruler for corner cuts

To perform angled cuts, the standard equipment of the machine includes a stop mounted on the carriage. A simple fastening system ensures maximum convenience and cutting accuracy.

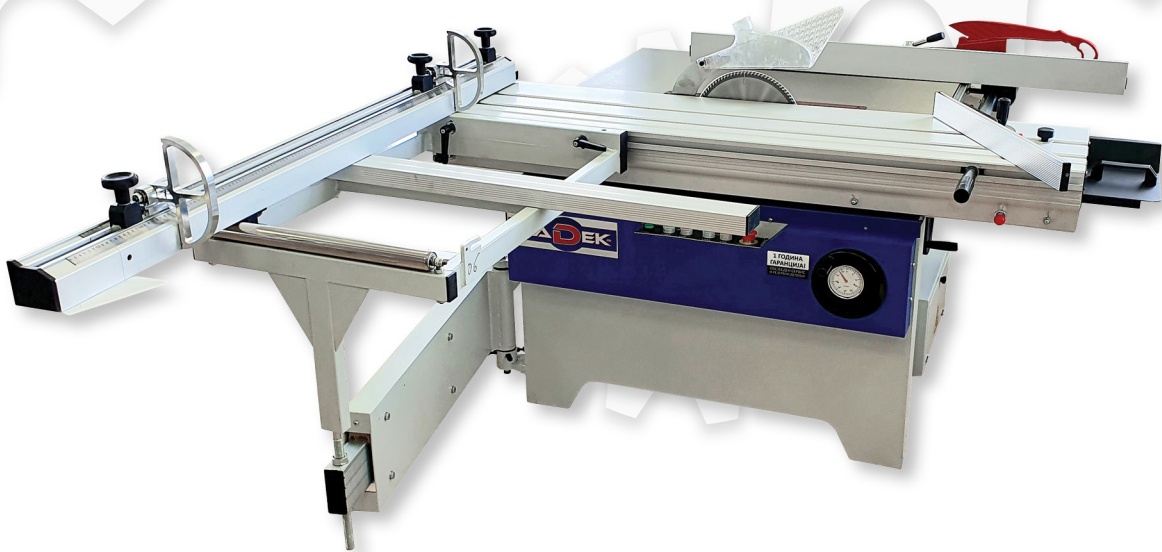
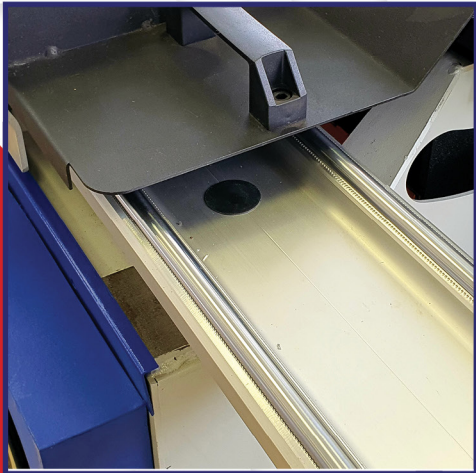
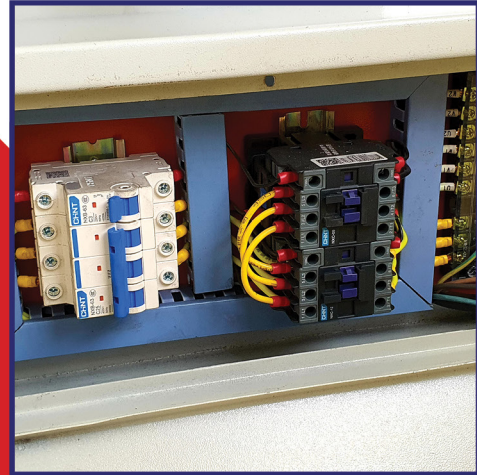
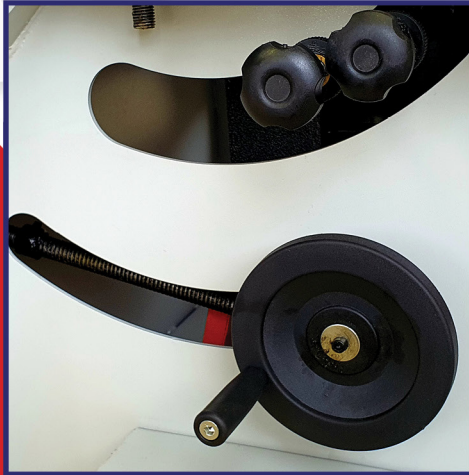




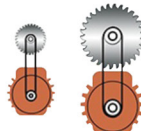
Purpose

The RK-1600-PRO format cutting machine is designed for longitudinal, transverse and angular cutting of slab materials (MDF, fiberboard, chipboard and laminated boards) lined and laminated, as well as blanks made of solid wood, with preliminary trimming of the lower edge to prevent chipping.

DETAILS



80mm-saw 300



0.75 4.0

