



RK-153P-PRO

CNC PLASMA

ENSURES ACCURACY AND FIRST CLASS PERFORMANCE!

**BEST
SELLER**



Enables cutting of
uneven plates

**1 YEAR WARRANTY
AND UNLIMITED SUPPORT**

Working space	1500x3000mm (optional 2000x4000)
Cutting speed	0-50m/min
Accuracy of movement	≤0.005mm
Power	10kW-12.5kW (optional)
Interface	USB
Pistol lifting distance	130mm
Portability	20mm square guide
Command	G Code
Air cutting	Air/Nitrogen/oxygen
Gas pressure	0.4-0.8MPa
Machine size	3800x2300x1600mm
Packing size	3800x2200x1650mm
Weight	1300kg

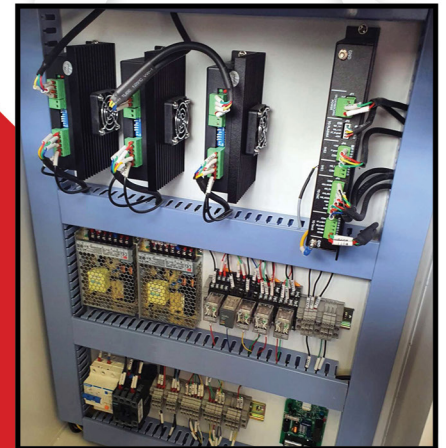
Starcam software
(licenced)

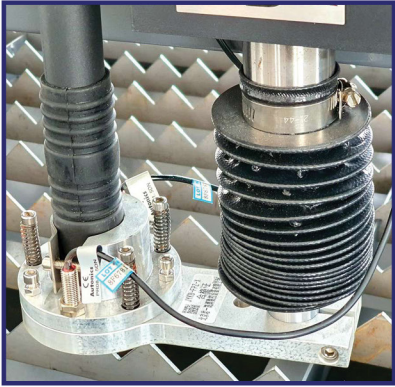
HYDTHC HEIGHT
CONTROLLER

HG20 Taiwan Hiwin square
rolls and tilted teeth rack



STARFIRE control system





Autonics sensors



**Optional flame cutting
for thicker plates**



Lubricating unit



**Leadshine step motors
and drivers
(optional servo motors)**

HIGH QUALITY PLASMA SOURCE

Model	LGK-100IGBT	LGK-120IGBT	LGK-100IGBT	LGK-100IGBT
Rated input voltage	3~380V/50Hz			
Rated input capacity	17.8KVA	22.4KVA	32.2KVA	46.7KVA
Rated output current	100A	120A	160A	200A
Rated output voltage	120V	128V	144V	160V
Rated load sustainability	100%	100%	100%	100%
No-load voltage	300VDC	300VDC	315VDC	315VDC
Regulating range of current	30~100A	30~120A	40~160A	40~200A
High quality cutting thickness	0.3~22mm	0.3~25mm	1~35mm	1~45mm
Maximum cutting thickness	40mm	45mm	55mm	65mm
Use of plasma gas	compressed air	compressed air	compressed air	compressed air
Working gas pressure	0.4~0.6MPa	0.4~0.6MPa	0.4~0.6MPa	0.45~0.6MPa
The cooling method of cutting torch	air-cooled	air-cooled	air-cooled/ water cooling	air-cooled/ water cooling
Arc ignition mode	Non contact mode			
Insulation grade	F			
Shell protection grade	IP21S			
Dimension	675x320x605	675x320x605	800x380x650	800x380x810
Weight	45kg	46kg	65kg	82kg

YouTube CHECK UP OUR YOUTUBE CHANNEL FOR VIDEO

