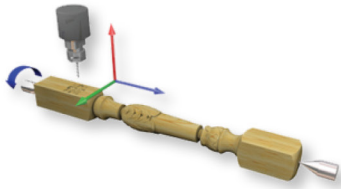




RK-132X-PRO

CNC ROUTER

RELIABLE PROVEN MACHINE FOR EVERY WOODWORKER

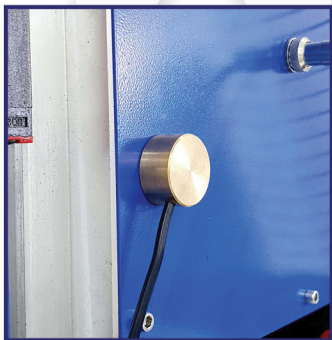


ROTATION AXIS



**PREMIUM QUALITY
2 YEARS WARRANTY
AND UNLIMITED SUPPORT**

Working area X-axis	1300mm
Working area Y-axis	2500mm
Working area Z-axis	200mm
Traveling positioning accuracy	±0.05mm
Repositioning accuracy	±0.05mm
Working speed	20m/min
Body structure	Steel structure
X,Y ,Z Structure	German gear wheel for X Y axis, Taiwan TBI ball screw fo Z axis
Spindle power motor	6kW (optional 9kW)
Spindle speed	0-18000rpm/min
Drive motor	Stepper motors (optional Servo)
Inverter	7.5kW
Command	G-code*.u00*.mmg*.plt
Working voltage	380V 50Hz 3phase
Software	Ucancam V11 (licenced)
Machine size	3060x2550x2150mm
Weight	1600kg



MEASUREMENT AND CALIBRATION OF TOOL LENGTH

Carries out automatic control of tool length and allows, when starting work, to quickly enter data on the table surface (Z=0) and material height. Provides fast input of parameters, protection of a surface of a table that increases productivity of the machine and the level of safe work.



ELECTRO SPINDLE 6kW – 18.000rpm

The design of the spindle is based on the best design solutions of the world's leading manufacturer of spindles - HSD (Italy). High rotational speed (18.000 rpm) and optimum power (6 kW) make it possible to process parts made of wood, as well as chipboard, MDF, plastic, acrylic, glass and other materials for the manufacture of furniture, doors, advertising and souvenirs with high quality.

SAMPLES



Rotating axis

Maximum working diameter 200mm. Complete with motor, gearbox, three-jaw chuck and sliding tailstock. Full four-axis machining is supported.

All-welded steel base

Made of rectangular steel tubes, it provides a sufficient degree of rigidity to the machine structure and good resistance to static and dynamic loads. The bed is made by CNC metalworking centers, which makes it possible to obtain high accuracy and quality when processing workpieces of any size.

Steel portal

The teeth in helical gears are loaded gradually as they enter the engagement zone, at least two pairs of teeth are always in engagement. These factors determine the smooth operation of the helical gearing, as well as the reduction of noise and additional dynamic loads in comparison with the spur gearing.

Helical gear - X-Y axis

Made of rectangular steel pipes and reinforced with additional stiffeners inside. The construction of the portal provides a high degree of rigidity, resistance to static and dynamic loads. Portals frame is made by CNC metalworking centers. Guaranteed high accuracy and quality better than the cheap light weight aluminum portals.

Ball screw - Z axis

As the Z axis is considered the most loaded axis during machining, the use of ball screws ensures extremely low friction of the elements, and this in turn protects the assembly from rapid wear and a significant decrease in efficiency, as well as from heating the rubbing elements during operation.

Vacuum table with "T" - grooves

The working table of the machine is made of wear-resistant polymer with integrated aluminum rails "T" -shaped. This design makes it possible to choose the method of fixing the workpiece, by vacuum absorption or with the help of mechanical clamps. This allows you to turn off the vacuum pump and save energy while not requiring frequent changing workpieces.

HQ Stepper motor

Moving along all axes, provide accurate positioning of the portal and spindle in accordance with the specified program. Low purchasing cost but cost-efficient in using.

Six zones for vacuum table

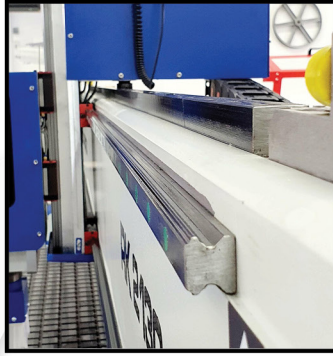
On the front of machine it's six clamps for different zones. That ensures stability anywhere on the board, when we process small pieces.



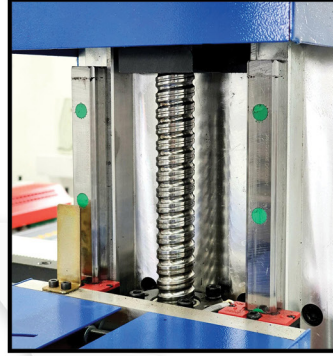
DETAILS



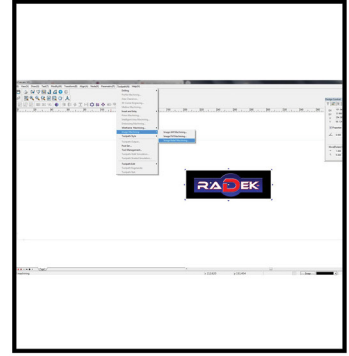
Welded all steel frame



HG20 Taiwan HIWIN square rails, tilted teeth rack



Z axis Taiwan TBI Brand ball screw



UCANCAM Software



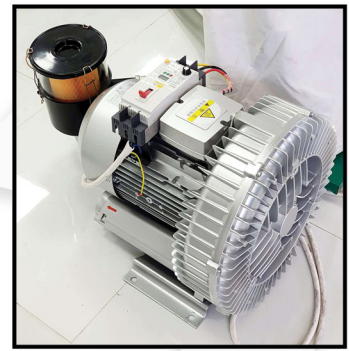
Fuling Inverter 7.5kW



DSP A11 control system (optional HMI)



YAKO 2811 drivers



Vacuum pump 7.5kW air cooling



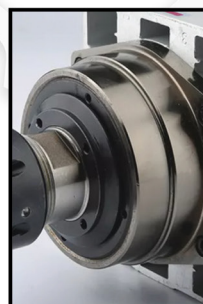
Automatic oil lubricating system



Aluminum desktop covered with wear resistant plastic, specially designed for use with a vacuum pump. This table allows you to quickly and permanently install the workpiece on the work. Also, the workpiece on the table can be mechanically fixed with clamps, for this, the table was divided into 4 zones using a T-shaped profile.



HQD new air-cooled spindle



Strictly sealed and dustproof

