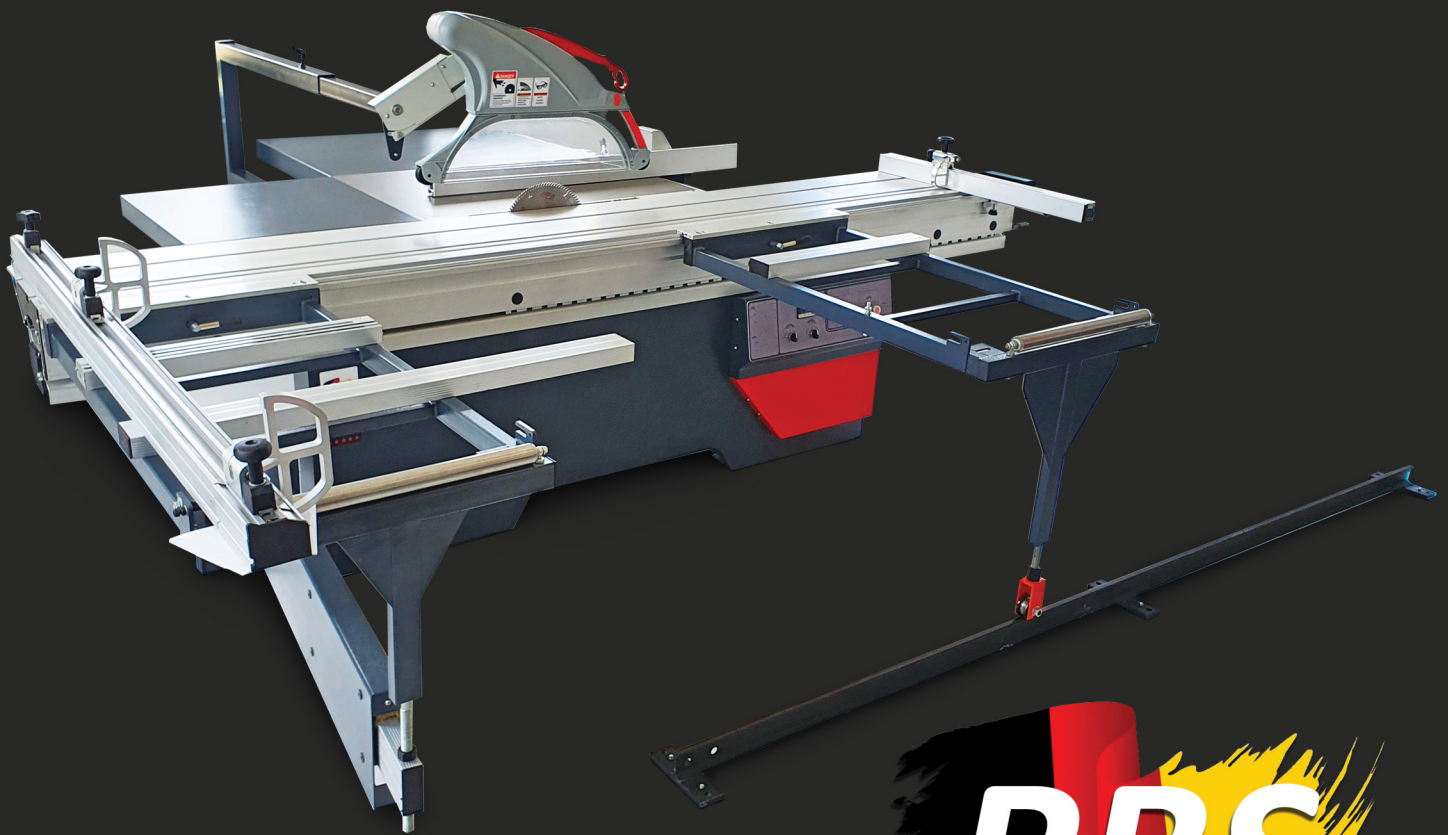


SLIDING TABLE SAW

RBS-3200-PREMIUM



RBS

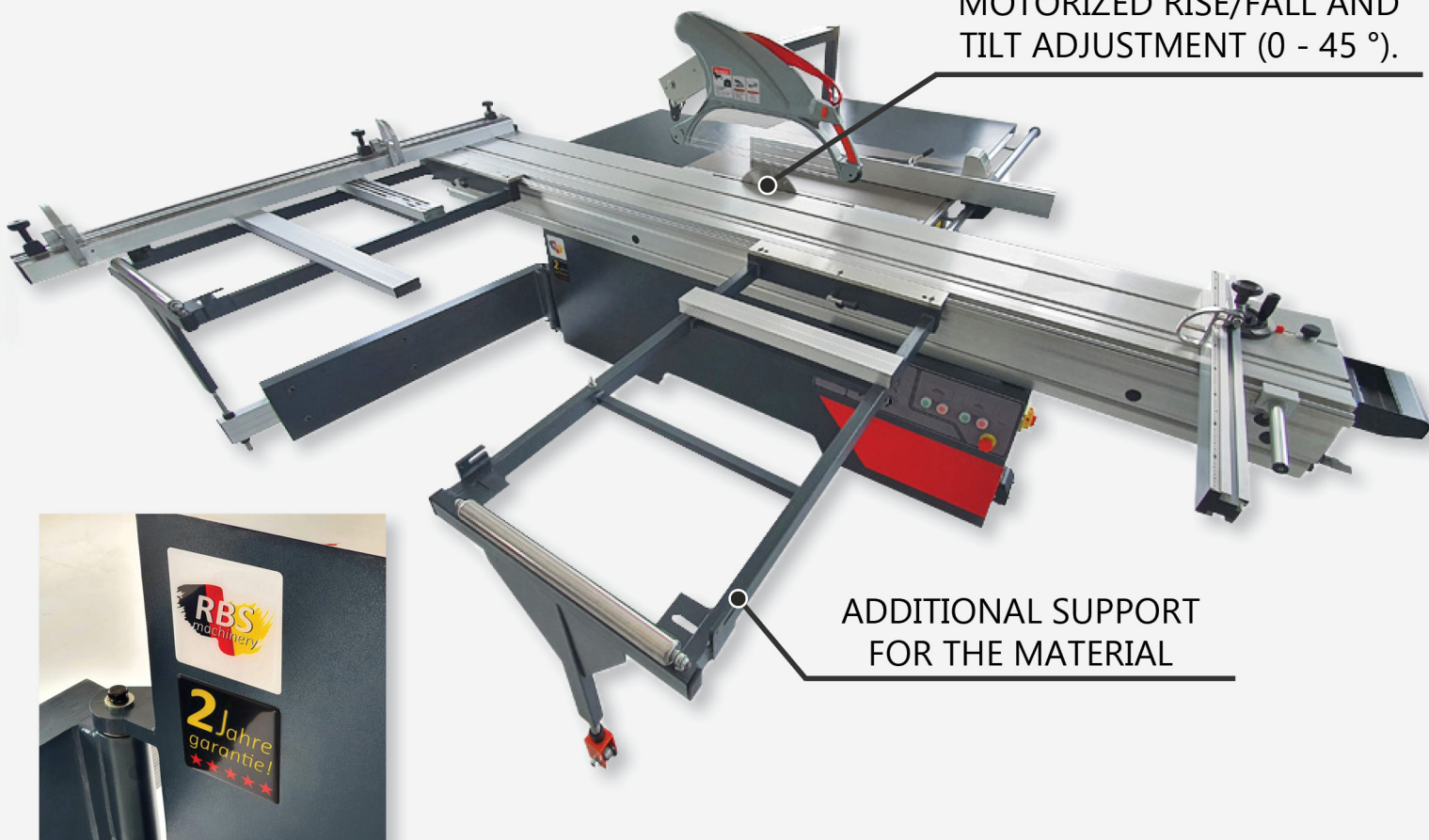
- ➔ High quality cast iron machine table and aggregates.
- ➔ Complete reliability in professional use.
- ➔ First class manufacturing and finishing standards.
- ➔ 10 years warranty on sliding table, 2 years on other parts.

Sliding Table Saw

RBS-3200-PREMIUM

TECHNICAL PARAMETERS

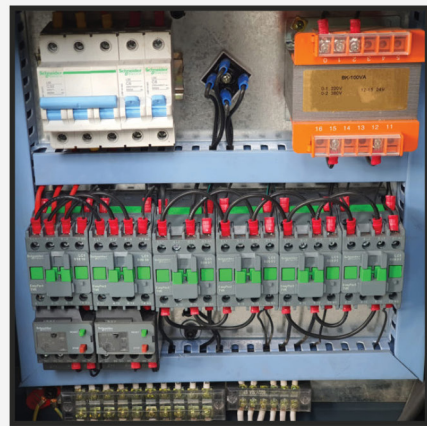
- Machine size 3200x3150x900mm
- Sliding table size 3200x430mm
- Max. cutting length 3100mm
- Cutting width between saw blade and rip fence 1200mm
- Max. cutting thickness 80mm (100mm optional)
- Main saw blade diameter 305mm (400mm optional)
- Scoring blade diameter 120mm
- Main saw blade speed 3000/4000/5000rpm
- Scoring saw blade speed 8800rpm
- Main saw spindle diameter 30mm
- Scoring saw spindle diameter 20mm
- Main motor 5.5kW
- Scoring motor 1.1kW
- Saw blade titling angle 90°-45°
- Weight 900kg
- Packing size 2180x1220x980mm
3400x480x270mm



MOTORIZED RISE/FALL AND
TILT ADJUSTMENT (0 - 45 °).

ADDITIONAL SUPPORT
FOR THE MATERIAL

- ▶ The sliding table is constructed of aluminum material. Design is widely recognized as the superior choice for highend sliders today.
- ▶ Ultra-smooth movement allows you to move the table effortlessly.
- ▶ Rip fence with manual fine adjustment and digital display. European style rip fence consists of a heavy-duty casting riding on a micro-polished solid steel bar.
- ▶ The rip fence is outfitted with a micro adjustment for fine-tuning; simply lock it in place and adjust fence incrementally.
- ▶ Digital display of the tilt angle.
- ▶ New saw unit with a stiff cast-iron structure, It ensures a perfect and easy cutting of veneer panels and thick solid wood.



LUBRICATION SYSTEM

LARGE SUCTION HOOD



Sliding Table Saw

RBS-3200-PREMIUM

