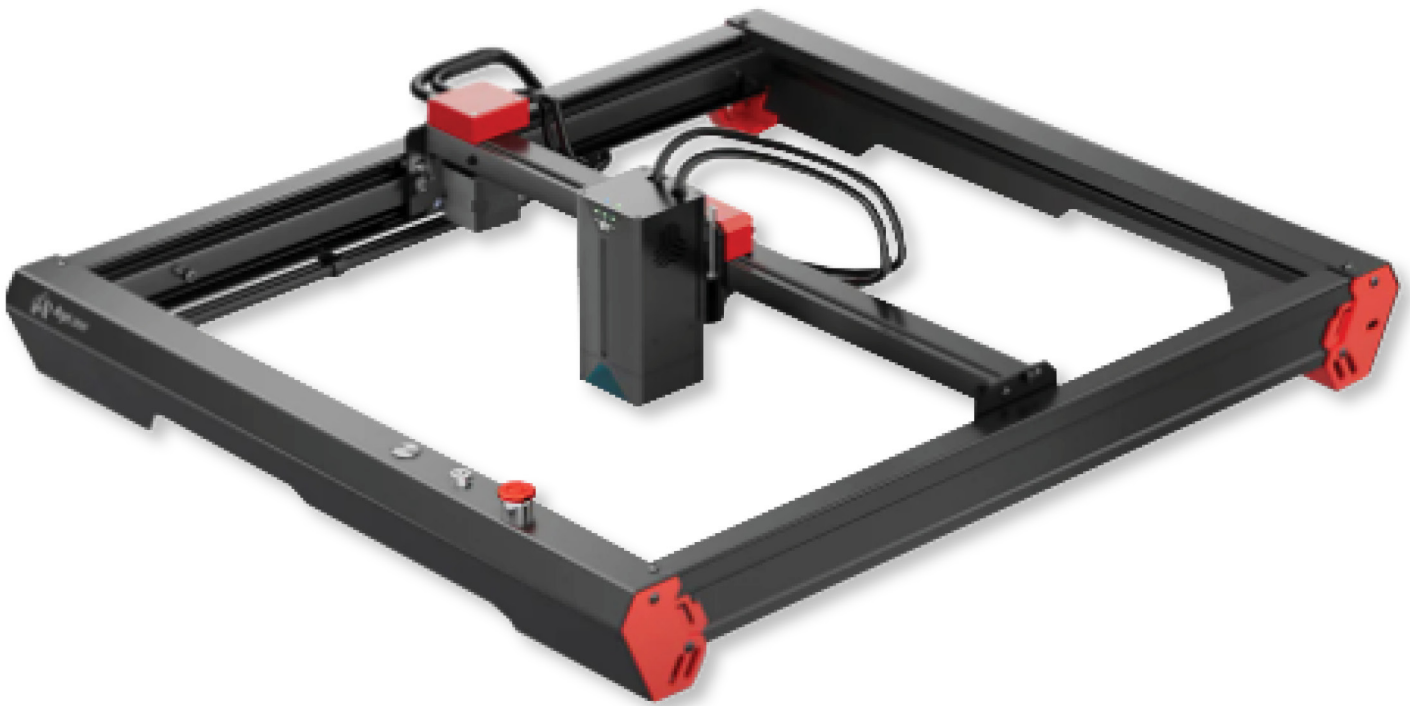




ALPHA 22W

DIODE LASER ENGRAVER

GREAT PARTNER FOR DIVERSE ENGRAVING AND CUTTING JOBS



22W Optical
laser power



10X Faster
speed



Dual Core
ESP32 S3



500+ Colorful
engraving

**1 YEAR WARRANTY
AND UNLIMITED SUPPORT**



TECHNICAL PARAMETERS

Optical power	22W
Machine power	144W
Power supply	24V/6A
Maximum engraving speed	20,000 mm/min
Maximum motion speed	30,000 mm/min
Spot size	X 0.06mm - Y 0.05mm; At 100% power: X 0.16mm - Y 0.14mm
Laser head life expectancy	>8000 hours
Certification	FCC/CE/RoHS/FDA
Safety features	Active power-out detection and protection, laser over exposure time limit, USB disconnect shutdown, emergency stop button, gyroscope detection, motherboard overtemperature protection
System supported	Android, iOS, Windows, Mac OS, Web-based
Control software	AlgoLaser App / LightBurn/LaserGRBL
Compatible accessories	22W laser module, motorized Z-axis, engraving platform, fireproof box, rotary chuck, rotary roller
File format supported	JPG, SVG, PNG, BMP, G-code, CAD, AI, CDR, DWG, etc.
Machine size	585x674x200mm
Packing size	840x260x270mm
Weight	8.7kg

Best one-pass cutting material and thickness

- 10mm Birch plywood
- 12mm Basswood plywood
- 5mm Eucalyptus plywood
- 30mm Pine board
- 15mm Paulownia plank
- 10mm White oak
- 5mm MDF
- 10mm Black acrylic
- 3mm Yellow acrylic
- 5mm Red acrylic
- 3mm Gray cardboard
- 0.17mm Stainless steel plate
- 10mm Bamboo

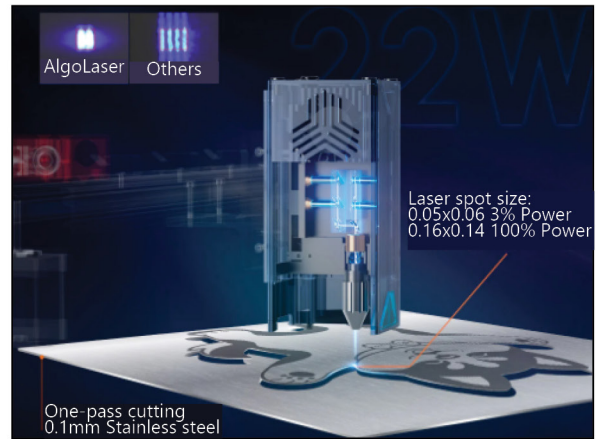
Max cutting thickness

- 12mm Birch plywood / 3
- 20mm Basswood plywood / 15
- 15mm Eucalyptus plywood / 6
- 20mm Paulownia plank / 3
- 45mm Black acrylic / 15
- 8mm Green acrylic / 6
- 10mm Red acrylic / 6
- 12mm MDF / 6
- 6mm Gray cardboard / 2
- 20mm White oak / 5



The 2nd COS Optical Technology

Adopting the advanced second-generation COS technology, the polarized beam combination improves the performance of the laser beam by 40%. Compared to regular 20W laser modules, COS technology compresses the laser spots from a rectangle to a square having a near 1:1 ratio on both low (3%) and high power (100%).



Artwork with 500+ shades of color

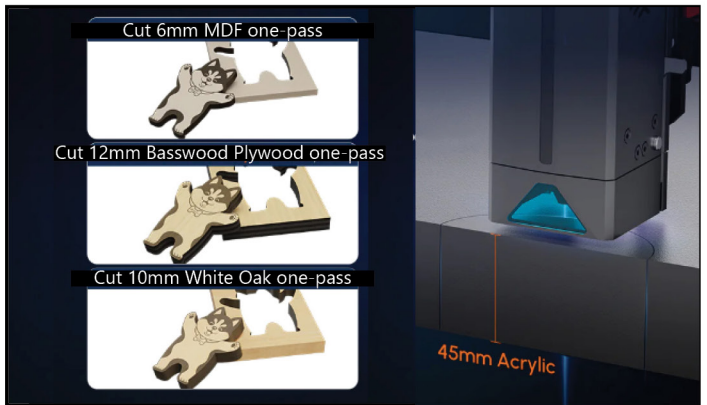
Make your projects stand out with vibrant and durable colors.

Faster engraving speed 500mm/s

10X faster! Allowing you to complete projects in record time without sacrificing quality.



Powerful motherboard, self-developed firmware



Incredible cutting ability

Super powerful 22W laser module handles various material thicknesses for cutting easily.



Unparalleled accuracy achieved

DETAILS

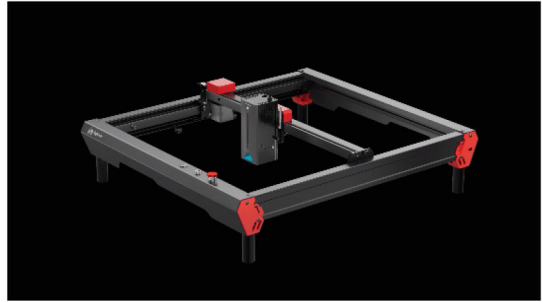
Super strong wheels

The laser slide is very smooth and doesn't get stuck



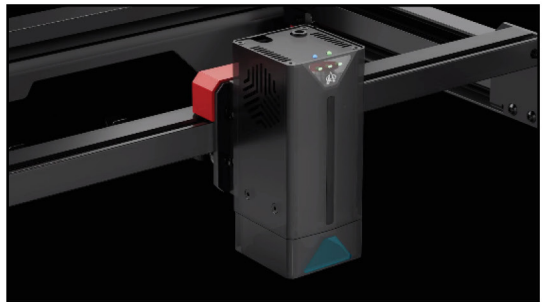
Versatile accessory family

Risers, Rotary Chuck, Rotary Roller

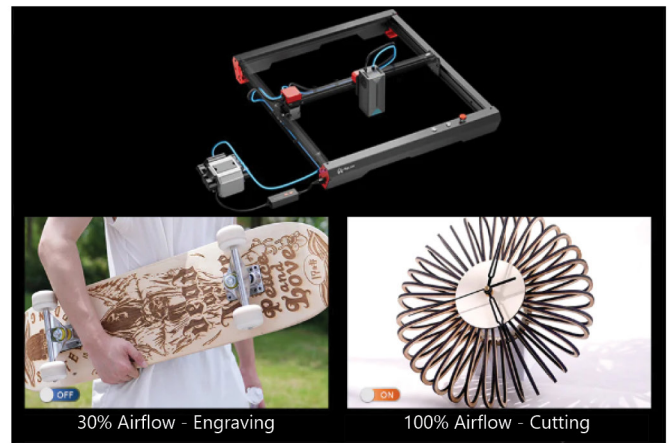


Focus mode

Semi-auto focus



Your safety is our most concern



Included plug & play smart air pump

Pre-assembled structure and simple installation steps allow you to start the journey with ease.

